

REDHAWK Linux®
Version 7.5
Release Notes

June 2019

0898003-7.5d



Disclaimer

The information contained in this document is subject to change without notice. Concurrent Real-Time, Inc. has taken efforts to remove errors from this document, however, Concurrent Real-Time, Inc.'s only liability regarding errors that may still exist is to correct said errors upon their being made known to Concurrent Real-Time, Inc.

License

Duplication of this manual without the written consent of Concurrent Real-Time, Inc. is prohibited. Any copy of this manual reproduced with permission must include the Concurrent Real-Time, Inc. copyright notice.

Trademark Acknowledgments

Concurrent Real-Time, Inc. and its logo are registered trademarks of Concurrent Real-Time, Inc.. All other Concurrent Real-Time product names are trademarks of Concurrent Real-Time while all other product names are trademarks or registered trademarks of their respective owners. Linux® is used pursuant to a sublicense from the Linux Mark Institute.

Contents

1.0	Introduction	1
1.1	Product Description	1
1.2	Product Media	2
1.3	Version Numbers	3
1.4	System Updates	4
1.5	Syntax Notation	4
2.0	Documentation	5
2.1	RedHawk Linux Documentation	5
2.2	Vendor Documentation	6
3.0	Prerequisites	7
3.1	Software	7
3.2	Hardware	7
4.0	Changes in this Release	8
4.1	Enhancements in Version 7.5	8
4.1.1	Based on CentOS 7.5	8
4.1.2	Based on kernel.org 4.9	8
4.1.3	Updated NVIDIA® Driver	8
4.1.4	Updated CUDA SDK	8
4.1.5	Ubuntu Supported	8
4.1.6	Updated Grub Utility	8
4.2	Modifications in Version 7.5	8
4.2.1	Upgrades from Version 7.x	9
4.2.2	OpenOnload® Network Stack	9
4.2.3	NUMA Kernel Text Page Replication	9
4.2.4	Additional Steps for Enabling SELinux	9
5.0	Installation Procedures	10
5.1	Installing CentOS Software	11
5.1.1	Installing CentOS	11
5.1.2	Installing CentOS Updates	26
5.2	Installing RedHawk Linux	29
5.3	Installing the RCIM	32
5.3.1	Quick Hardware Installation Checklist	32
5.3.2	Verifying RCIM Operation	33
5.3.3	Installing NTP Updates for GPS Module	34
5.4	Installing Frequency-Based Scheduler (FBS) Software	34
5.5	Installing Additional RedHawk Products	35
5.6	Installing RedHawk Updates from Disc	35
5.7	Installing RedHawk Updates from the Updates Web Site	36
6.0	Upgrade Procedures	37
6.1	Pre-Upgrade Procedure	37
6.2	RedHawk Pre-Upgrade Steps	38
6.3	Upgrade RedHawk to RedHawk 7.5	39
7.0	NVIDIA Graphics Configuration	41
7.1	Supported NVIDIA GPUs	41
7.2	Multiple NVIDIA Video Card Considerations	41
7.3	Display Configurations	42

7.3.1	Single	42
7.3.2	Xinerama	42
7.3.3	MultiDesktop	42
7.3.4	Twinview	43
7.3.5	Twinview-Xinerama	43
7.3.6	Twinview-MultiDesktop	44
7.4	Using nvidia-xconfig	44
7.5	Using nvidia-settings	44
7.6	Modified xorg.conf file generated by nvidia-xconfig	52
7.7	Troubleshooting Problems	53
8.0	Additional Information	55
8.1	Installation/Configuration Issues	55
8.1.1	File System Backup Recommendations	55
8.1.2	File System Swap Size Guidelines	56
8.1.3	RCIM Connection Modes	56
8.1.4	How to Use Linux Rescue	56
8.1.5	How to Install CentOS Remotely Over VNC	59
8.1.6	If the Installation GUI Fails to Start	61
8.2	Considerations	62
8.2.1	Compiler Requirements	62
8.2.2	Hyper-thread Activation	62
9.0	Known Issues	63
10.0	Software Updates and Support	67
10.1	Direct Software Support	67
10.2	Software Updates	67
10.2.1	Updating via NUU	67
10.2.2	Installing Manually Downloaded RPMs	68
10.2.3	Customized Update Discs	70
10.3	Documentation Updates	70

Appendix A

Ubuntu Support

Overview	A-1
Installing Ubuntu	A-1
Installing RedHawk Linux	A-3
RedHawk Software Updates	A-5
Ubuntu-Specific Notes	A-7
Building Custom Kernels	A-7
Installing Custom Kernels	A-7

Appendix B

ARM64 Support

Overview	B-1
Installation	B-1

1.0. Introduction

This document provides release information and installation instructions for Concurrent Real-Time, Inc.'s RedHawk™ Linux® operating system Version 7.5.

1.1 Product Description

RedHawk Linux is a real-time version of the open source Linux operating system. Modifications are made to standard Linux version 4.9 to support the functionality and the performance required by complex real-time applications. RedHawk uses a single kernel design to support a single programming environment that directly controls all system operation. This design allows deterministic program execution and response to interrupts while simultaneously providing high I/O throughput and deterministic file, networking, and graphics I/O operations. RedHawk is the ideal Linux environment for the deterministic applications found in simulation, data acquisition, industrial control and medical imaging systems.

Included with RedHawk is the popular CentOS Community ENTerprise Operating System® version 7.5. However, note that RedHawk can also be installed on *any* CentOS-compatible version 7.5 distribution. In addition, RedHawk 7.5 now supports the popular Ubuntu distribution; see Appendix A, *Ubuntu Support*, for more information.

The RedHawk installation media provide additional real-time kernels and libraries for accessing RedHawk specific kernel features. Optionally, the NightStar™ RT development tool set is available for developing real-time applications, and the Frequency-Based Scheduler can be used to schedule cyclic applications driven from a real-time clock or other external interrupt source. The Performance Monitor module allows you to get detailed CPU utilization of each process on such a scheduler.

The RedHawk kernel integrates both open source patches and Concurrent Real-Time developed features derived from the real-time UNIX® implementations that Concurrent Real-Time has supported in its over 45 years of experience developing real-time operating systems.

RedHawk is included with each Concurrent Real-Time iHawk™ system. iHawks are symmetric multi-processor (SMP) systems available in a variety of architectures and configurations, though only 64-bit capable iHawks can run RedHawk 7.5 as it is only available in a 64-bit version.

Support for SMP is highly optimized. A unique concept known as *shielded CPUs* allows a subset of processors to be dedicated to tasks that require the most deterministic performance. Individual CPUs can be shielded from interrupt processing, kernel daemons, interrupt bottom halves, and other Linux tasks. Processor shielding provides a highly deterministic execution environment that guarantees processes fast and dependable response to external events.

RedHawk Linux matches the level of POSIX® conformance of other Linux distributions based on the 4.9 series of kernels. Linux on the Intel® x86 and ARMv8-A architectures has defined a defacto binary standard which allows shrink-wrapped Linux applications that are designed to run on the Intel x86 and ARMv8-A platforms to run on Concurrent Real-Time's iHawk platforms.

NightStar RT is Concurrent Real-Time's powerful real-time tool set that provides a robust graphic interface for non-intrusive control, monitoring, analysis, and debugging of real-time multiprocessing applications. All tools can be run natively on the same system as the application or remotely. The NightStar RT tools include the following:

- NightView™ source-level debugger – allows multi-language, multi-processor, multi-program and multi-thread monitoring and debugging from a single graphical interface.

- NightTrace™ run-time analyzer – analyzes the dynamic behavior of a running application.
- NightSim™ periodic scheduler – allows the user to easily schedule applications that require periodic execution.
- NightProbe™ data monitor – used to sample, record or modify program data in multiple running programs.
- NightTune™ performance tuner – used for analyzing system and application performance.

1.2 Product Media

The tables below list the optical media discs that are delivered with RedHawk Linux Version 7.5 for each Concurrent Real-Time system.

WARNING

While much of the software on the RedHawk media is licensed under the GNU GPL license, some components are not. Therefore, the media cannot be freely copied.

Product Media

Processor Type: Intel and AMD x86_64 64-bit	
Model:	iHawk Intel-based systems [HQxxx] iHawk AMD-based systems [HRxxx] iHawk ARM-based systems [HAxxx] ImaGen Intel-based systems [HQ0G1] ImaGen AMD-based systems [HR0G1]
Operating System Discs:	
CentOS 7.5 (64-bit) (1 DVD)	[WA-CENT, WA-CENT-ARM64 Version 7.5]
CentOS 7.5 Source (64-bit) (2 DVDs)	[WA-CENT, WA-CENT-ARM64 Version 7.5]
CentOS 7.5 Updates (64-bit) (1 DVD)	[LXUPDATE Version 7.5]
RedHawk Linux OS (64-bit) (1 DVD)	[WA-EM64T-AMD64, WA-ARM64 Version 7.5]
Software Updates for RedHawk (1 DVD or 1 CD, if present)	
Optional Discs:	
RedHawk Linux Frequency-Based Scheduler for x86_64 Systems	[WU1210-JA Version 7.5]
NightStar RT for RedHawk	[WU1220-LDV, WU1220-LDVF Version x.x (x.x=latest version)]
RedHawk Architect (64-bit)	[W-RHLE-E64] Version 7.5

1.3 Version Numbers

All RedHawk Linux version numbers take the following form:

$$major.minor[.update]$$

where:

major is the product's major version number
minor is the product's minor version number
update is the update's incremental version number

For example, 7.0 is the initial release of major version 7, and 7.2 is a subsequent release to version 7.0. Both 7.0 and 7.2 constitute complete product releases and do not require a previous release to be currently installed on the system; both are available on optical media from Software Distribution.

Individual kernel updates available via the RedHawk Updates website (see the "System Updates" section below) are not a complete product and can only be installed as an update to the matching *major.minor* release. For example; a 7.5.1 kernel update can only be installed on a system currently running RedHawk Linux version 7.5.

1.4 System Updates

As RedHawk Linux updates are issued, they are made available for downloading from Concurrent Real-Time's Software Portal.

NOTE

Concurrent Real-Time does not recommend arbitrarily downloading CentOS updates.

The RedHawk Linux kernel replaces the standard CentOS kernel and is likely to work with any version of the CentOS distribution. However, installing upgrades, especially to **gcc** and **glibc**, from sources other than Concurrent Real-Time may destabilize the system and is not recommended. Security updates from outside sources may be installed freely if desired.

Instructions for downloading updates from the website are provided in the section "Software Updates" on page 67.

1.5 Syntax Notation

The following notation is used throughout this document:

<i>italic</i>	Books, reference cards, and items that the user must specify appear in <i>italic</i> type. Special terms may also appear in <i>italic</i> .
list bold	User input appears in list bold type and must be entered exactly as shown. Names of directories, files, commands, options and man page references also appear in list bold type.
list	Operating system and program output such as prompts, messages and listings of files and programs appears in list type.
[]	Brackets enclose command options and arguments that are optional. You do not type the brackets if you choose to specify these options or arguments.
hypertext links	When viewing this document online, clicking on chapter, section, figure, table and page number references will display the corresponding text. Clicking on Internet URLs provided in <i>blue</i> type will launch your web browser and display the web site. Clicking on publication names and numbers in <i>red</i> type will display the corresponding manual PDF, if the file is available and accessible.

2.0. Documentation

2.1 RedHawk Linux Documentation

Table 2-1 lists the documentation provided with RedHawk Version 7.5 as PDF files. After installing RedHawk Linux documentation, the files are available for viewing:

- by clicking on the “Documents” icon on the desktop
- from Concurrent Real-Time’s documentation web site at <http://redhawk.concurrent-rt.com/docs>

Table 2-1 RedHawk Linux Documentation

RedHawk Linux Operating System Documentation	Document Number
<i>RedHawk Linux Version 7.5 Release Notes</i>	0898003-7.5
<i>RedHawk Linux User’s Guide</i>	0898004-780
<i>Real-Time Clock & Interrupt Module (RCIM) User’s Guide</i>	0898007-620
<i>RedHawk Linux FAQ</i>	N/A
Optional RedHawk Product Guides	
<i>RedHawk Linux Frequency-Based Scheduler (FBS) User’s Guide</i>	0898005-350
Optional RedHawk Product Documentation Sets	
<i>RedHawk Architect Release Notes</i>	0898600-7.5
<i>RedHawk Architect User’s Guide</i>	0898601-7.5

The Optional RedHawk Product Documentation Sets include Concurrent Real-Time’s user guides as PDF files along with additional vendor documentation PDFs that facilitate using these RedHawk products.

The latest documentation for all Concurrent Real-Time software products, including updated Release Notes and User Guides, can be accessed from Concurrent Real-Time’s documentation web site at <http://redhawk.concurrent-rt.com/docs>. An updated RedHawk FAQ can be accessed at <http://redhawk.concurrent-rt.com/docs/root/1redhawk/FAQ/RedHawk-FAQ.pdf>.

Printed copies can be ordered by contacting the Concurrent Real-Time Software Support Center. Refer to “Direct Software Support” on page 67 for details.

2.2 Vendor Documentation

CentOS operating system documentation is included as PDF files on the CentOS media delivered with RedHawk Linux.

Some RedHawk optional products include vendor documentation that facilitates using these RedHawk products.

Commercial off-the-shelf (COTS) documentation applicable to your iHawk system is included with the system. Contact the vendor's sales office to purchase additional copies.

3.0. Prerequisites

3.1 Software

No previously installed software is required in order to install RedHawk Linux. The complete RedHawk Linux installation consists of the following software:

- CentOS 7.5 with updates
- RedHawk Linux operating system (with optional updates)
- NightStar RT for RedHawk tools (optional)
- RedHawk Linux Frequency-Based Scheduler (FBS) (optional)
- RedHawk Architect (optional)

These packages operate only in a 64-bit environment. The operating environment on a system depends upon the processor type and the support included in the software for that processor. Refer to “Product Media” on page 2 for details.

NOTE

In RedHawk 7.5, real-time extensions and features are available to 32-bit compatibility-mode applications running under a 64-bit operating system (i.e. x86_64).

3.2 Hardware

- Any Concurrent Real-Time iHawk or ImaGen system
- Real-Time Clock and Interrupt Module (RCIM)

4.0. Changes in this Release

This section describes enhancements and other changes introduced in Version 7.5 (and any subsequent kernel updates if applicable).

4.1 Enhancements in Version 7.5

4.1.1 Based on CentOS 7.5

RedHawk 7.5 uses CentOS Community ENTERprise Operating System 7.5 as its base. CentOS 7.5 is the world-wide standard enterprise-class Linux distribution that provides a rock-solid foundation.

4.1.2 Based on kernel.org 4.9

RedHawk 7.5 uses the `kernel.org` Linux 4.9 kernel as the basis for its core kernel. This version includes many exciting enhancements. For more information examine the kernel change summaries at the <http://kernelnewbies.org> website.

4.1.3 Updated NVIDIA® Driver

RedHawk 7.5 includes the NVIDIA Linux Display Driver version 390.48. Legacy driver support for older NVIDIA GPUs is available for download from the NVIDIA website. Refer to "NVIDIA Graphics Configuration" on page 41 for details.

4.1.4 Updated CUDA SDK

RedHawk 7.5 includes pre-installed NVIDIA CUDA 9.1 libraries and header files. CUDA 9.1 has significant improvements over previous versions, including Pascal architecture support, unified memory, data migration APIs and the NVLINK™ high-speed interconnect. See the many resources at <http://www.nvidia.com> for more information.

Example CUDA code is also provided with RedHawk. See the files in the `/usr/share/doc/nvidia/cuda/samples` directory for more information.

4.1.5 Ubuntu Supported

In addition to CentOS and CentOS-compatible distributions, RedHawk 7.5 is available for the Ubuntu 16.04 distribution. See Appendix A, *Ubuntu Support*, for more information.

4.1.6 Updated Grub Utility

RedHawk 7.5 includes an updated grub utility, `ccur-grub2`, which may be used to quickly view a list of the available grub kernel entries. It may also be used to change the default kernel to boot and modify kernel boot-time options. See the `ccur-grub2(1)` man page for more information.

4.2 Modifications in Version 7.5

Users should be aware of modifications that are being introduced in the RedHawk 7.5 release; these changes are described in the following subsections.

4.2.1 Upgrades from Version 7.x

Systems installed with RedHawk 7.0, RedHawk 7.2, and RedHawk 7.3 can be upgraded to RedHawk 7.5 without having to do a full reinstall of the system. See "Upgrade Procedures" on page 37 for more information.

4.2.2 OpenOnload® Network Stack

The OpenOnload software will be available in an update to RedHawk 7.5 but it is not included in the initial RedHawk 7.5 release.

4.2.3 NUMA Kernel Text Page Replication

Kernel Text Page replication, a performance feature that replicates kernel text and read-only pages on Non-Uniform Memory Access (NUMA) nodes is not included in the RedHawk 7.5 release.

4.2.4 Additional Steps for Enabling SELinux

Enabling SELinux on RedHawk 7.5 systems requires an additional step to be performed. This step must be performed after enabling SELinux but *before* the system is rebooted. Issue the following command as the root user:

```
# touch /.autorelabel
```

You can now reboot the system and upon reboot SELinux will start successfully.

5.0. Installation Procedures

Use the installation procedures provided here to generate or regenerate a system.

NOTE: Upgrades from RedHawk 6.x to RedHawk 7.x are *not* supported.

NOTE: Resources to assist users supplying their own Red Hat software are available in the Concurrent Real-Time Software Documentation Library:

<http://redhawk.concurrent-rt.com/docs/document.cgi?document=1Linux/1RedHawk/7.5/RedHat>

Review the following points before installing the software:

- Concurrent Real-Time recommends these procedures be followed as documented here; however, advanced users may decide to make other choices based on onsite requirements.
- The installation media in use is accessed at various times and must be kept in the drive during the installation until you are instructed to install different media.
- Prior to installation, remove any floppy media that may have been left in the machine.

Before you start:

- **Main Memory Size** — You need to know the system's main memory size in order to properly set up the file system swap size. If you are not sure of the main memory size, access the system's BIOS to ascertain this information.
- **Network Addresses** — If you do not plan to configure networking via DHCP, you will need to have the following information for your system before beginning the installation:
 - IP address - gateway address
 - netmask address - primary and secondary DNS addresses
- **Firmware Settings** — Firmware settings should be reviewed before installation and whenever problems involving non-working devices are encountered. Exercise caution before changing default settings. Concurrent Real-Time makes the following recommendations:
 - "Linux" should be specified for the "Installed OS" setting (or its equivalent) if it is an available option. If not, use the default "other."
 - Only the default settings for memory functions and PCI timing functions are supported.
 - ACPI support should be enabled, but care should be taken before changing other ACPI options from their defaults. ACPI sleep states should *not* be enabled in the firmware or in any custom kernel build.
 - Ensure that the drive to be used for installations and updates is bootable and that the boot order is correctly set in the firmware so that you will boot to the installer from a disc.

5.1 Installing CentOS Software

The version of CentOS Community ENTerprise Operating System (CentOS) that is appropriate to your system's architecture must be installed on the system first by *specifically completing the steps below*.

Installation of CentOS is accomplished in two parts:

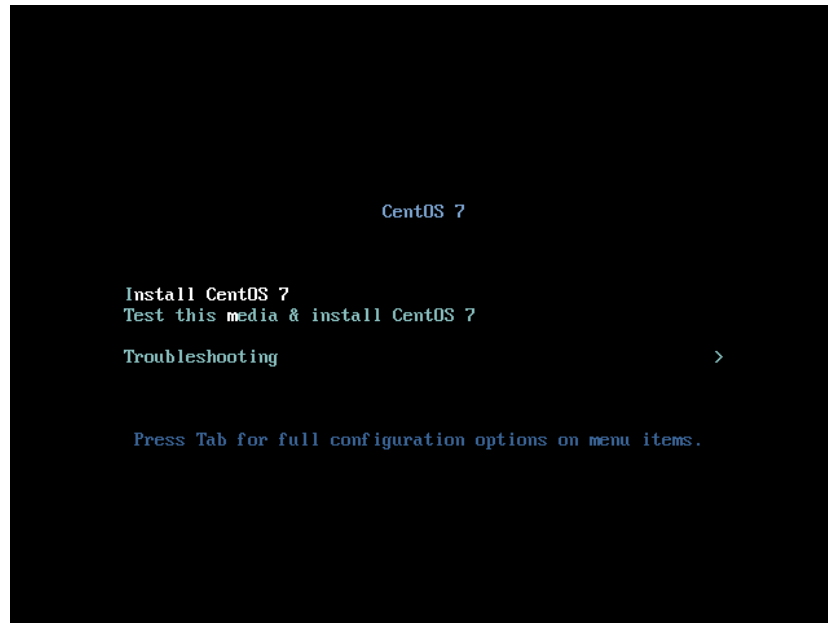
- Installing CentOS
- Installing CentOS Updates

If you already have a CentOS system installed at the 7.5 version level you can skip directly to "Installing CentOS Updates" on page 26.

5.1.1 Installing CentOS

This section typically takes between 40-70 minutes to complete.

1. Power on the system, if needed, to open the DVD drawer.
2. Insert CentOS Installation Disc in the drive and power down the system.
3. Power on the system with the installation disc installed to boot from the disc. After a short delay, the following screen should appear.



4. Initially the option to test the media is highlighted; press the Up Arrow to highlight Install CentOS 7 and press Enter.

NOTES

If the installation GUI does not launch:

If you wish to use GUI mode but it does not launch, refer to section **8.1.6** on page 61 for some boot options that may allow the GUI to launch. Some NVIDIA cards require specifying the display resolution before the install GUI will start. If successful, continue to follow the installation directions below.

In addition to GUI mode, CentOS can be installed in text mode or by using VNC.

In text mode, aids at the bottom of the screen describe how to navigate through the text mode screens and make selections. The instructions given in the steps below can be applied to both GUI and text mode installation; however, the number and order of the configuration screens differ slightly between the two modes.

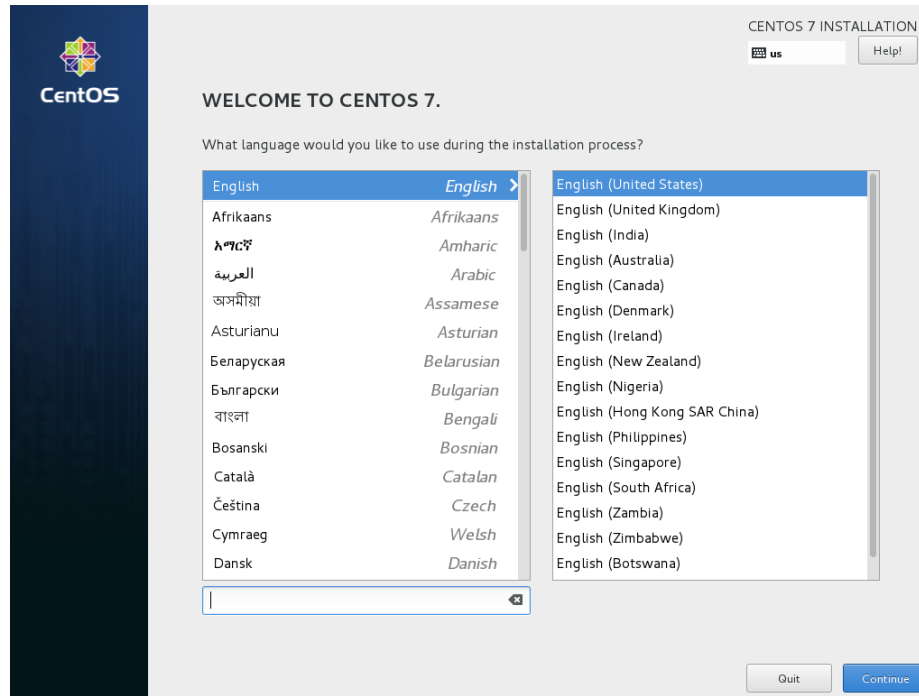
If you wish to use VNC for the installation instead of the GUI or text modes, refer to section **8.1.5** on page 59 for full instructions.

If your system contains disk drives or devices that are not supported by the CentOS installation program, you will need to obtain the necessary driver(s) in order to install CentOS Community ENTERprise Operating System. A diskette containing the driver may be included with your system or it may be available on the CentOS installation media. If not available, contact the driver manufacturer for an updated driver or call Concurrent Real-Time Support (see "Direct Software Support" on page 67).

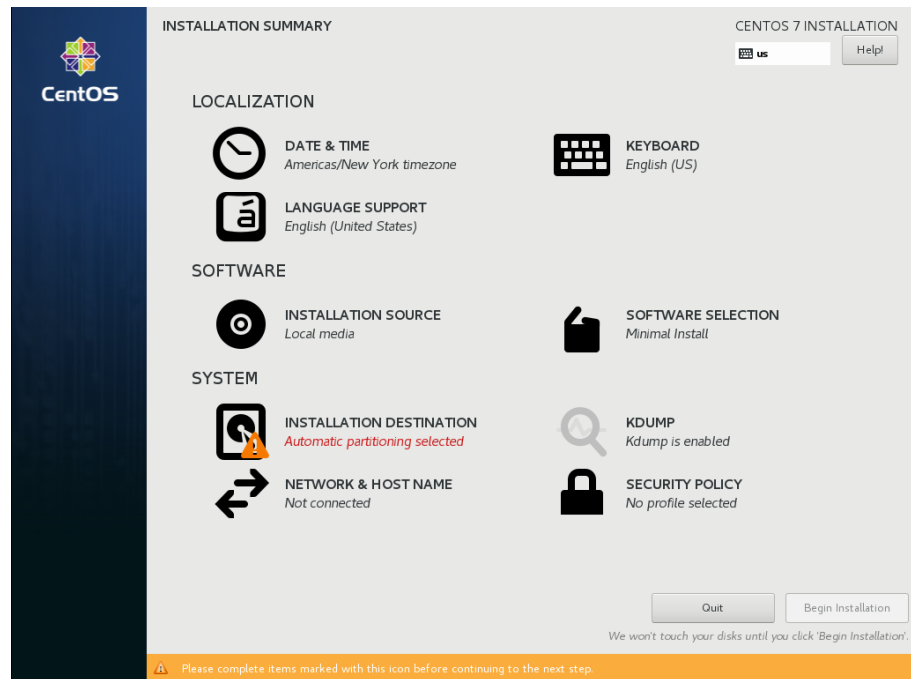
For this type of installation, type `linux dd` at the `boot :` prompt. Insert the diskette in the drive when instructed to do so.

If your hard drive is not recognized and no driver diskette is supplied, a screen appears stating that no hard drives are found, would you like to select drivers. The installation disc contains a number of device drivers. Select **Yes**, then **Add Device** to display a list of drivers. Select the desired driver and proceed through the screens, completing this action by selecting **Done**.

- Once the installation has started you will be presented with the following welcome screen.

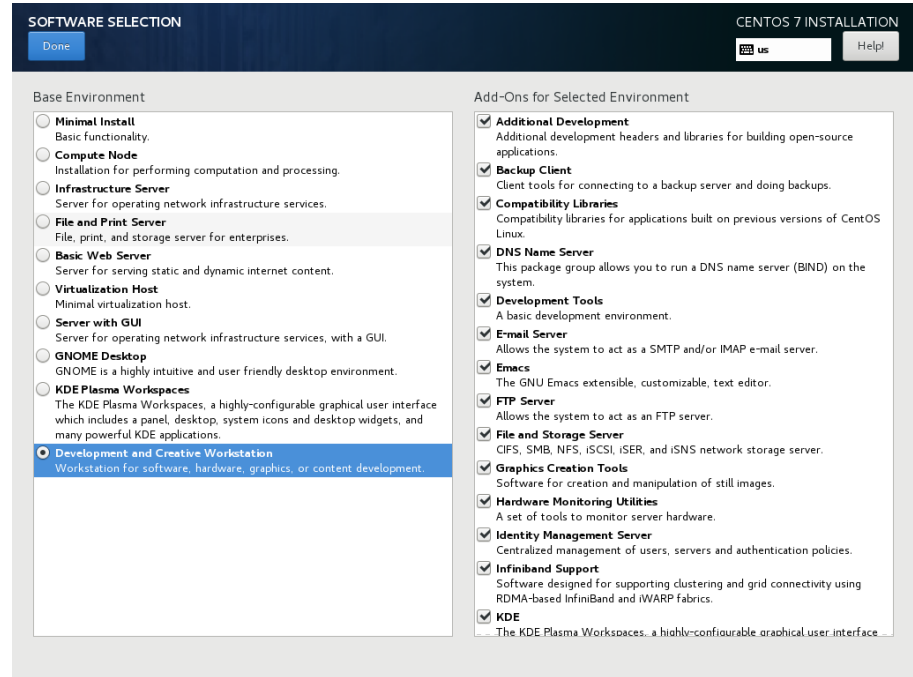


- Select your desired language and press **Continue** proceed.
- You will now be presented with the **Installation Summary** page, which is the main launching point for all installation activities.



Click on the settings under **Localization** if you wish to make any site-specific changes to the date, time, language and keyboard settings.

8. Click on **Software Selection** to select the package installation profile for the installation. The following screen will be displayed.

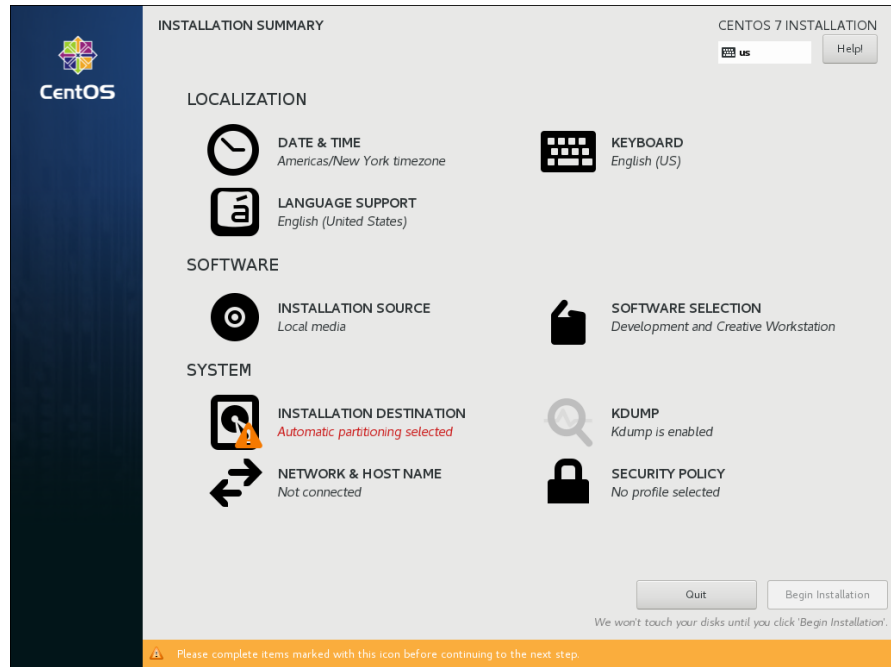


Choose **Development and Creative Workstation** and select all of the **Add-Ons** categories displayed on the right side of the screen.

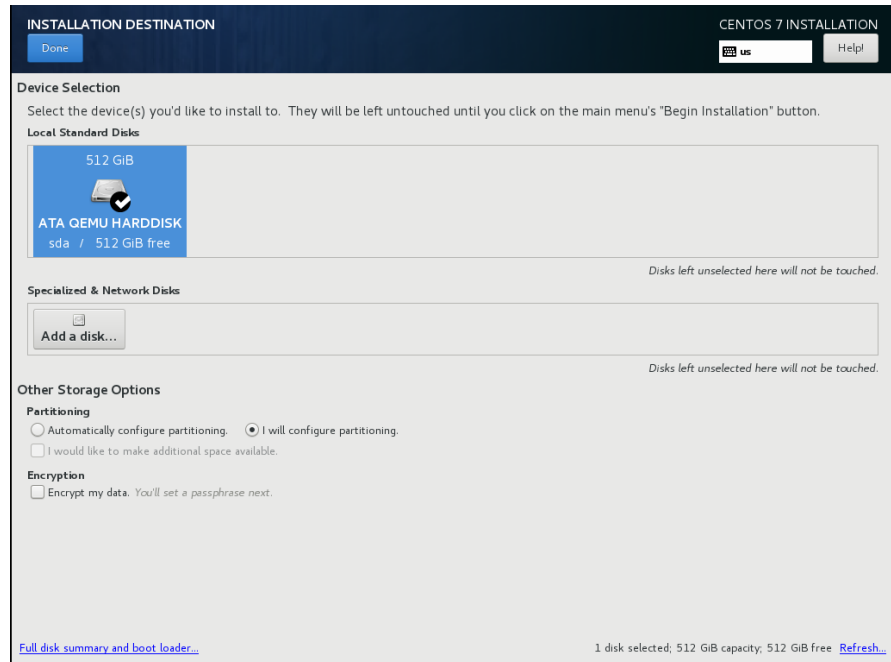
NOTE

Click on the top add-on (**Additional Development**) and then repeat pressing the down arrow on the keyboard, followed by the space bar, until all add-ons are selected. Note that the list will continue to scroll across multiple pages of add-ons and will stop scrolling only after reaching the last add-on.

Then press **Done** in the upper left corner to complete software selection and return to the **Installation Summary** page. The **Installation Summary** page should eventually appear as shown below.



- Next, click on **Installation Destination** to manually partition the system's hard drive for the best operation with RedHawk Linux. A page similar to the following page will be displayed.

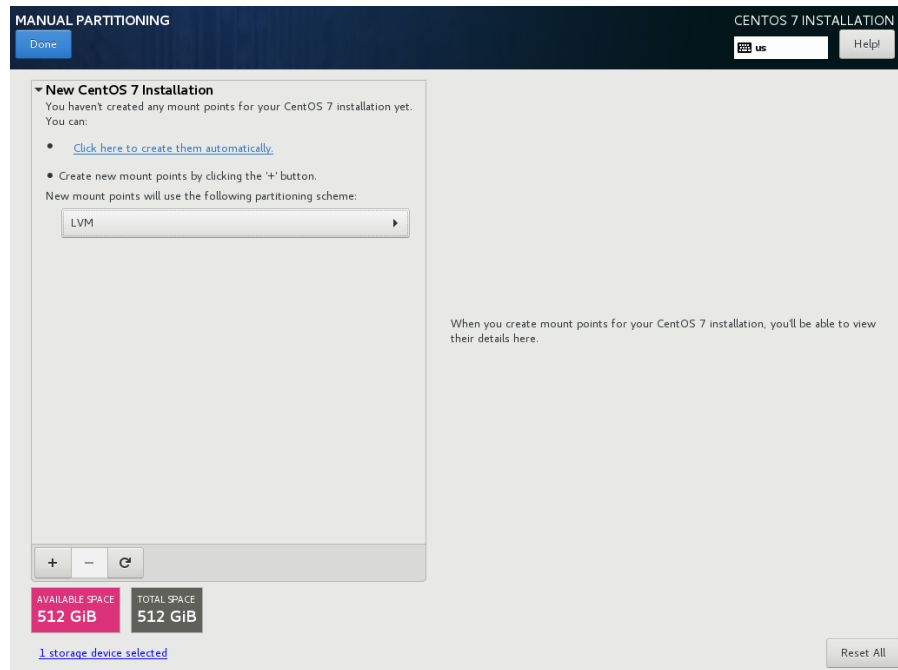


NOTE

If there is more than one hard drive attached to the system, you will see multiple hard drive icons displayed. In this case, select the hard drive where you wish to place the RedHawk installation, as well as any other drives that you wish to configure and/or format during the installation.

10. On this page, select **I will configure partitioning under Other Storage Options** and then press **Done** in the upper left to continue.

You will now be presented with the **Manual Partitioning** page, which should appear similar to the following.

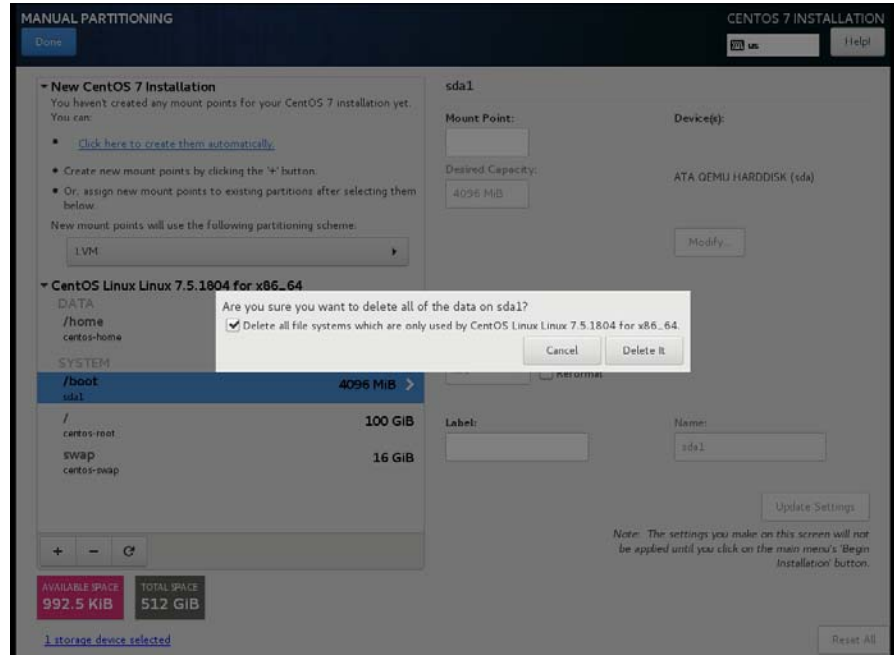


If the system's hard drive has been used previously, you should delete any existing partitions to start from a clean state.

NOTE

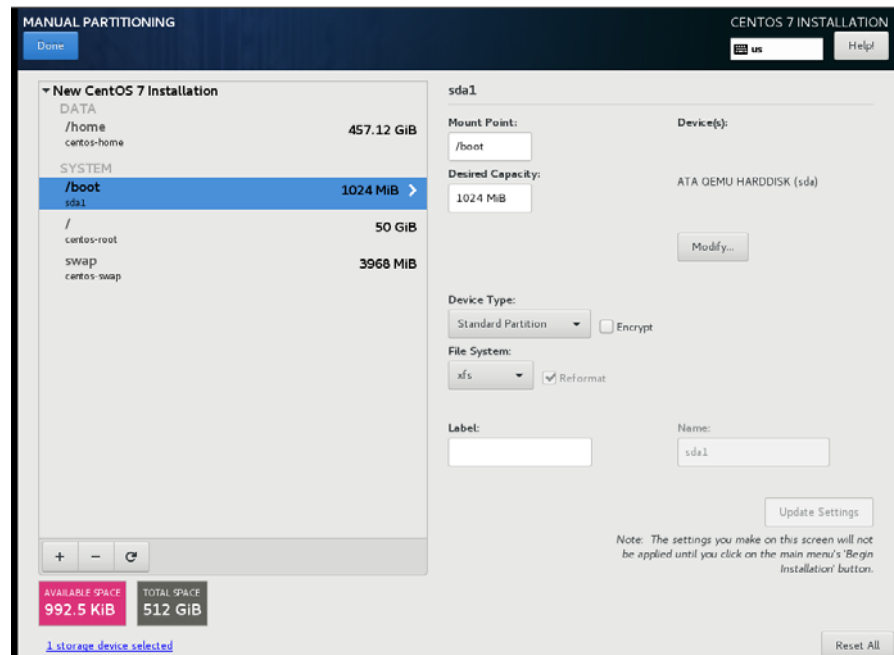
Deleting existing partitions is recommended unless you wish to create a multi-boot system. For example, one system with the ability to boot into multiple versions of RedHawk or possibly even Microsoft® Windows® operating systems. In these cases, consult with your system administrator as this document does not cover setting up a multi-boot system.

The following page illustrates selecting an existing `/boot` partition, clicking the “-” (minus) icon, checking the Delete all other filesystems checkbox, and finally pressing the Delete button to delete an entire existing partitioning scheme, if necessary.



11. On the Manual Partitioning page, press the Click here to create them automatically link to automatically create the necessary partitions required for your installation.

The following page shows an example of the automatically created partitions.



NOTE

The sizes of the automatically created partitions are inadequate; the following steps will adjust the partition sizes to be optimal for a RedHawk installation.

NOTE

Be careful not to accidentally press the **Done** or the **Reset All** buttons at this point. You must only press the **Done** button at the very end of modifying the partitions.

NOTE

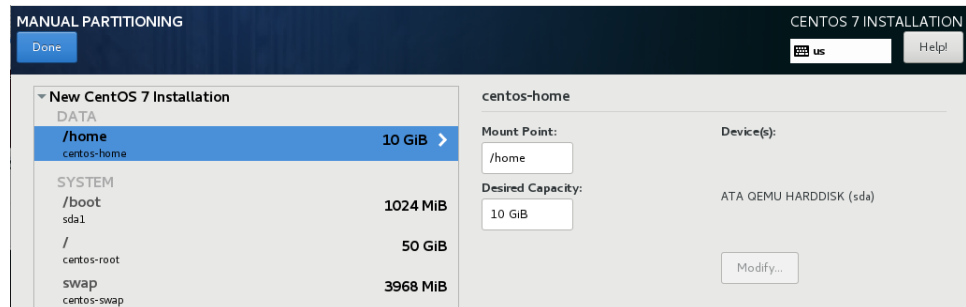
On systems configured to use UEFI, an additional `/boot/efi` partition will be automatically created. This partition is not included in the following examples, however do not modify this partition as it is already configured properly for a RedHawk installation.

12. On the Manual Partitioning page, select the `/home` partition, change the **Desired Capacity** to 10 GiB, and then press the **Update Settings** button.

NOTE

For smaller hard drives with 128 GB capacity or less, the separate `/home` partition should be eliminated by selecting it and pressing the `-` (minus) key at the bottom of the partition list. Then, skip to the next step and ignore `/home` in all of the examples.

The following snippet shows an example of what should now be displayed:

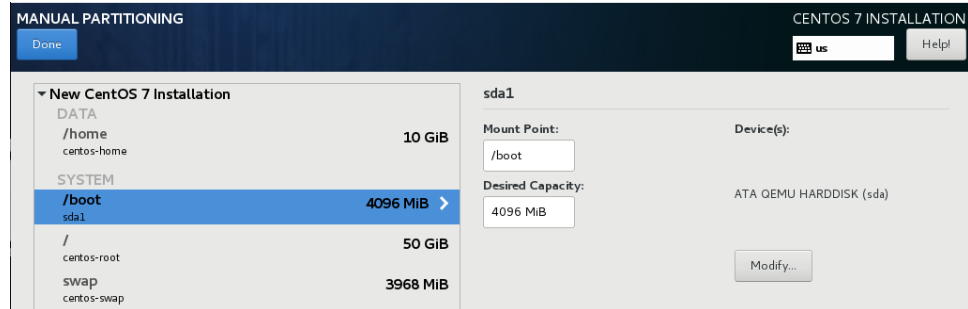


NOTE

Setting the `/home` partition to 10 GB is only a temporary change that is required in order to allow the other partitions to be resized.

- Next, select the `/boot` partition, change the Desired Capacity from 1024 MiB to 4096 MiB, and then press the Update Settings button.

The following snippet shows an example of what should now be displayed:

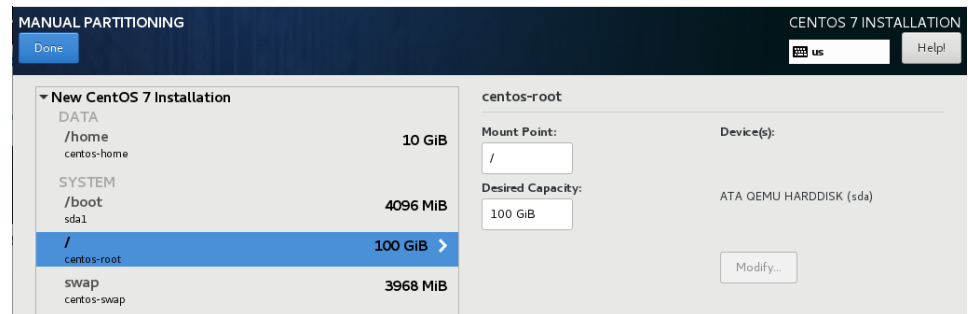


- Next, select the `/` partition, change the Desired Capacity to 100 GiB, and then press the Update Settings button.

NOTE

For smaller hard drives with 128 GB capacity or less you can leave the default for the `/` partition and skip to the next step to create the `swap` partition.

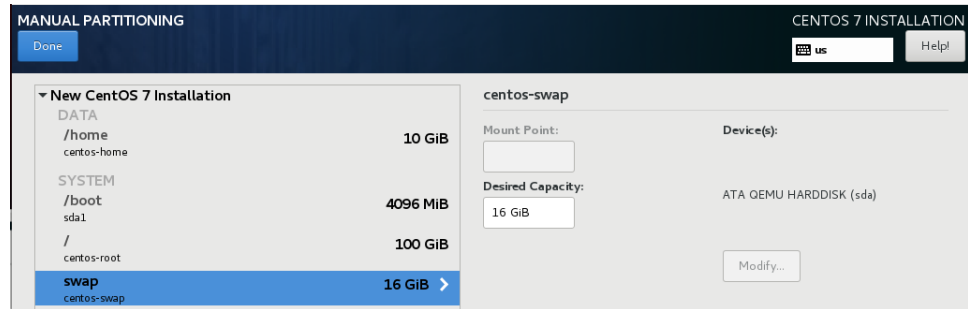
The following snippet shows an example of what should now be displayed:



- Next, select the `swap` partition, change the Desired Capacity to match the size recommended in the following table, and then press the Update Settings button.

Main Memory Size (GB)	Recommended Swap Partition Size
0 - 3	2048 MiB
4 - 15	4096 MiB
16 - 63	8192 MiB
64 - 255	16 GiB
256 - 511	32 GiB
512 - 1024	64 GiB

The following snippet shows an example of what should now be displayed:

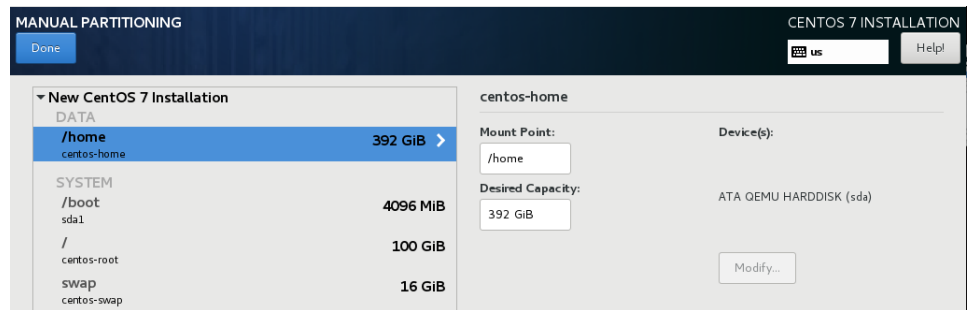


16. Lastly, select the `/home` partition again, delete all of the text in the **Desired Capacity** text field, and then press the **Update Settings** button to set the size to the maximum size available from the disk space remaining.

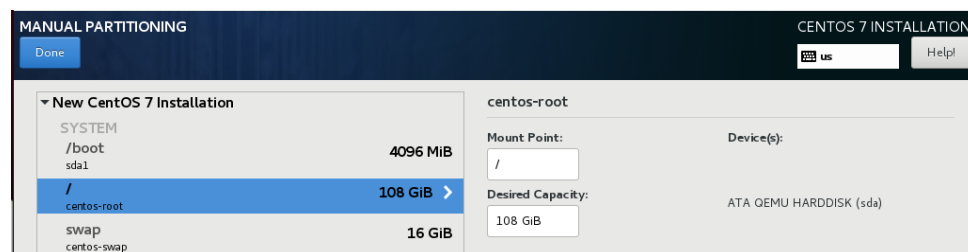
NOTE

For smaller hard drives with 128 GB capacity or less, the `/home` partition should have been deleted above, so you can perform this step with the `/` partition instead; thus, the `/` partition size will be set to the maximum size available using all remaining disk space.

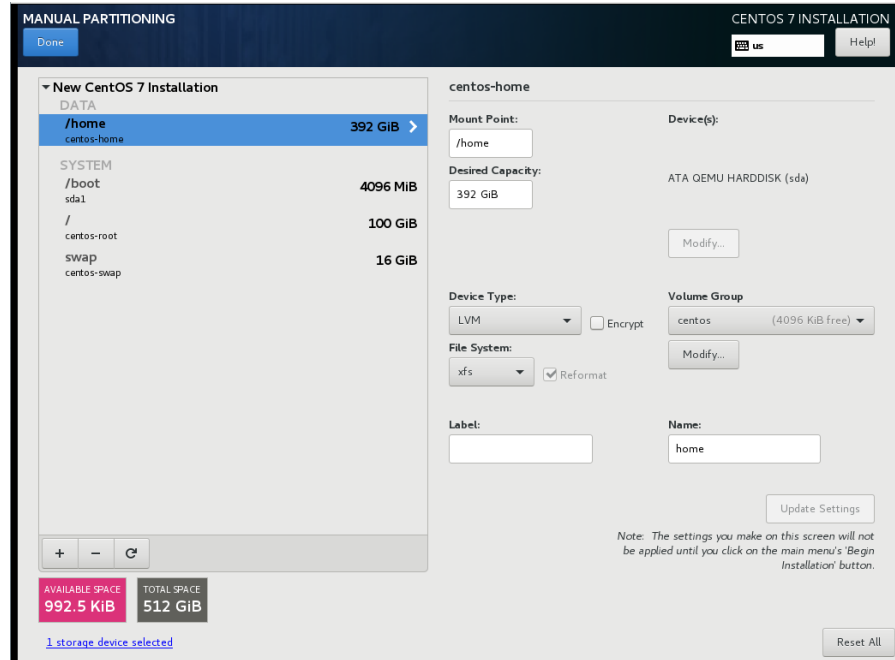
The following snippet shows an example of what should now be displayed:



Alternatively, here is an example of what should now be displayed for systems with smaller hard drives with 128 GB capacity or less that should not have a `/home` partition:

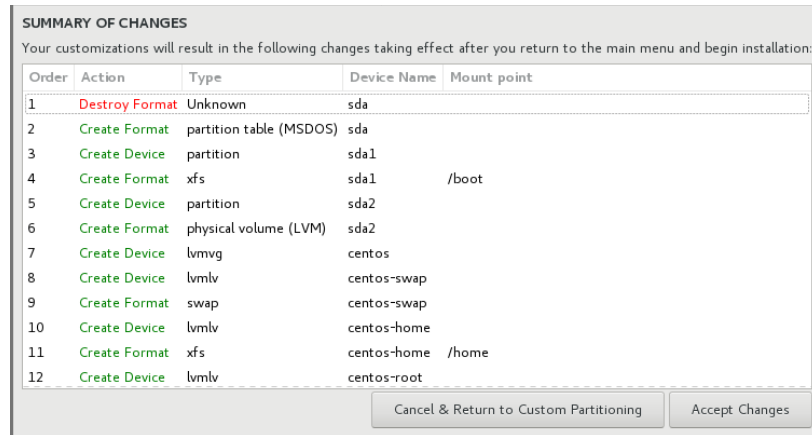


- At this point, you should now see a Manual Partitioning page similar to the following displayed.



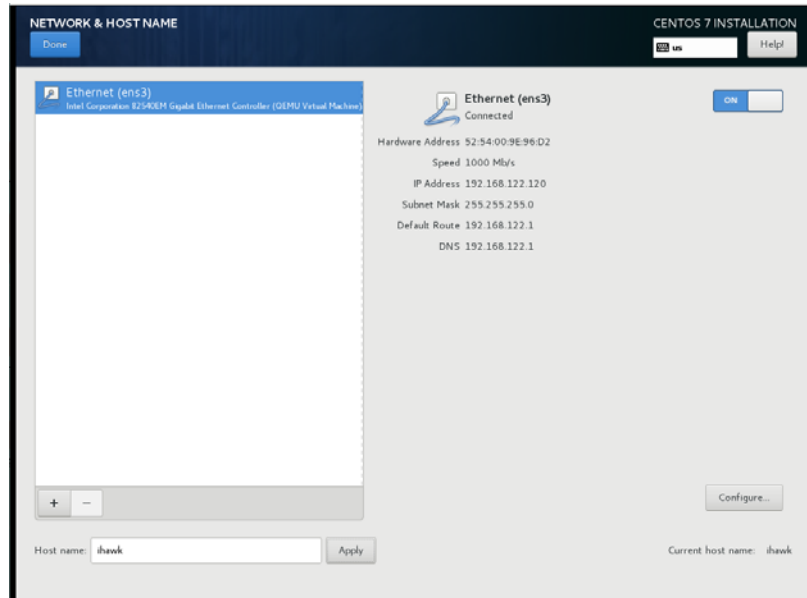
Finally, press the Done button to use this layout for the system's partitioning.

- You will now be presented with a Summary of Changes confirmation screen similar to the following:



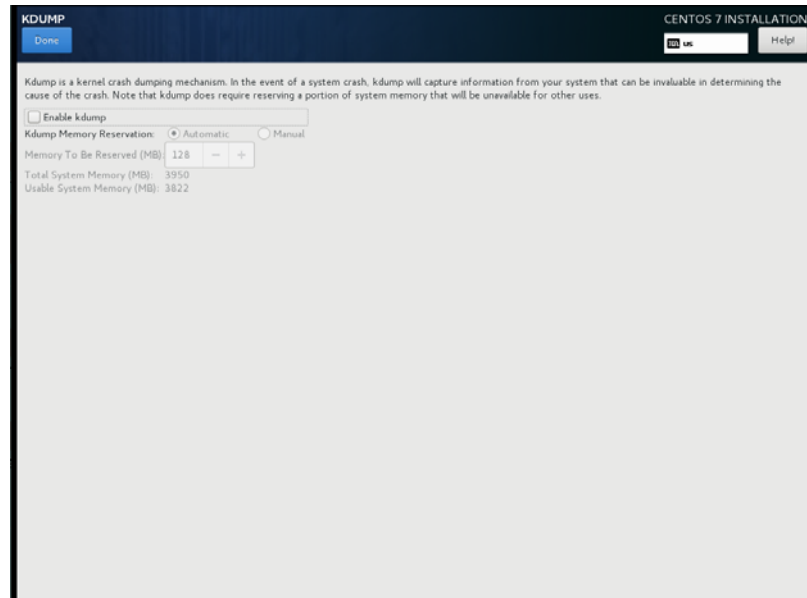
Next, press Accept Changes to accept the custom partitioning.

- Back on the Installation Summary page, click on Network & Hostname to set the system's hostname and networking configuration, as shown in the following example screen:



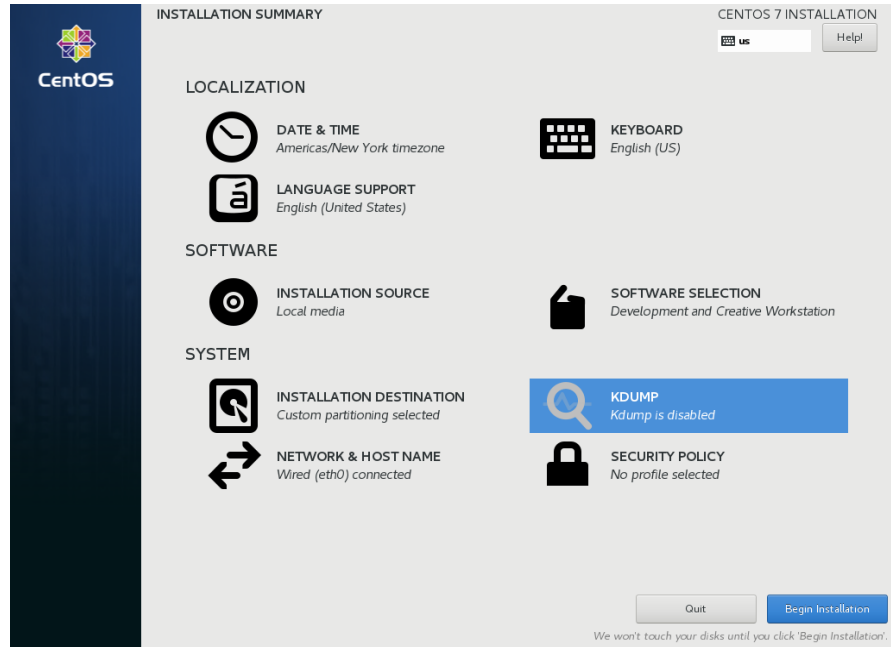
Ensure the connected device is set to ON and press Done when you have finished configuring all of the networking details.

20. Back on the Installation Summary page, click on KDUMP to deconfigure the default kernel crash dump settings, as shown in the following example screen:

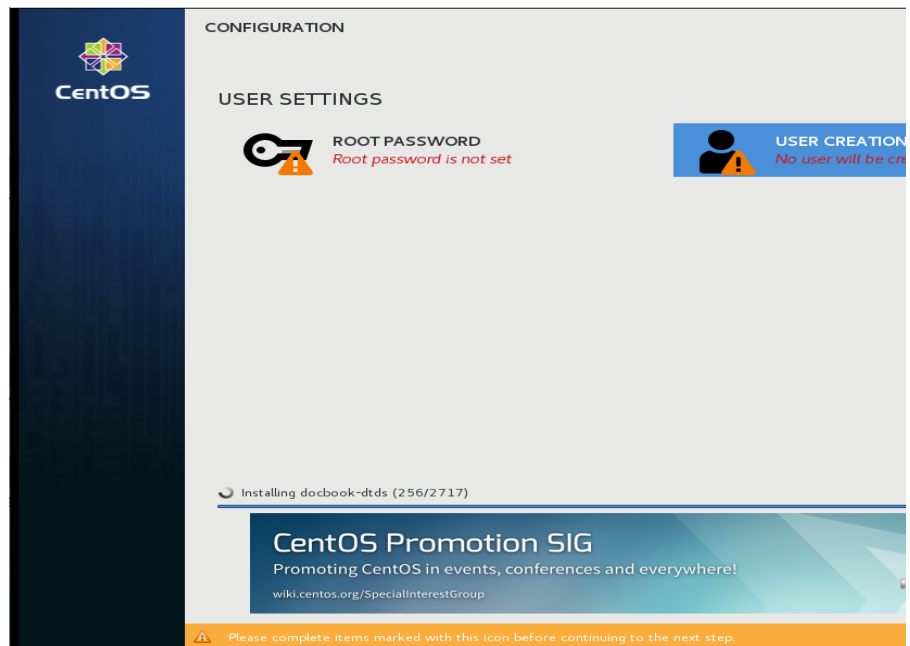


Uncheck the Enable kdump check box and then press Done.

21. The Installation Summary page should now appear as shown in the following example screen:



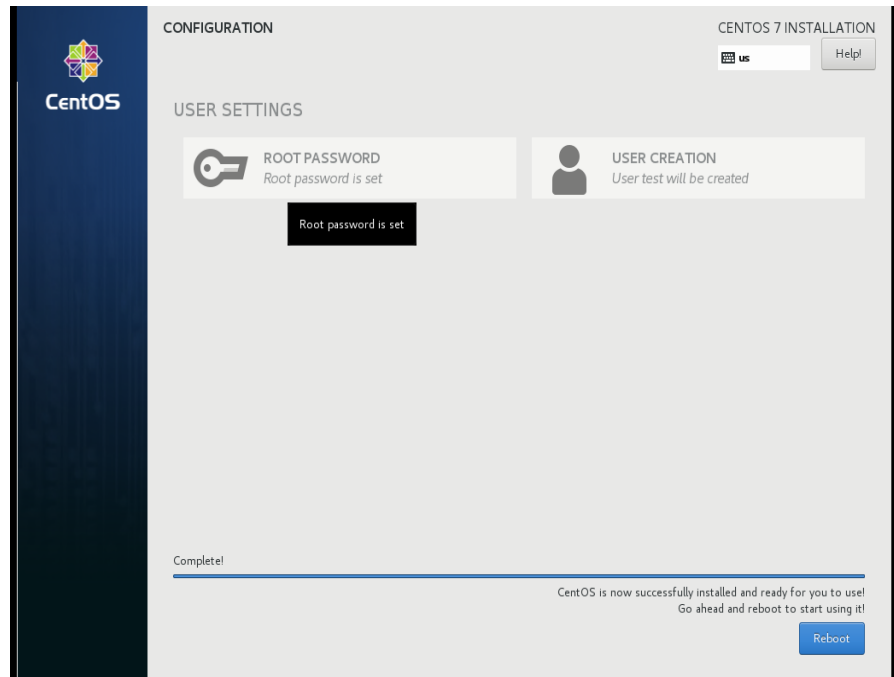
Press the **Begin Installation** button on the lower-right of the screen to start package installation. During installation, you will be presented with a screen similar to the following.



NOTE

During the system installation you must set the system's root password and also create a non-root user.

22. After all packages have been installed you will see the following screen.



Remove the installation DVD and press **Reboot** in the lower right to restart the system and continue.

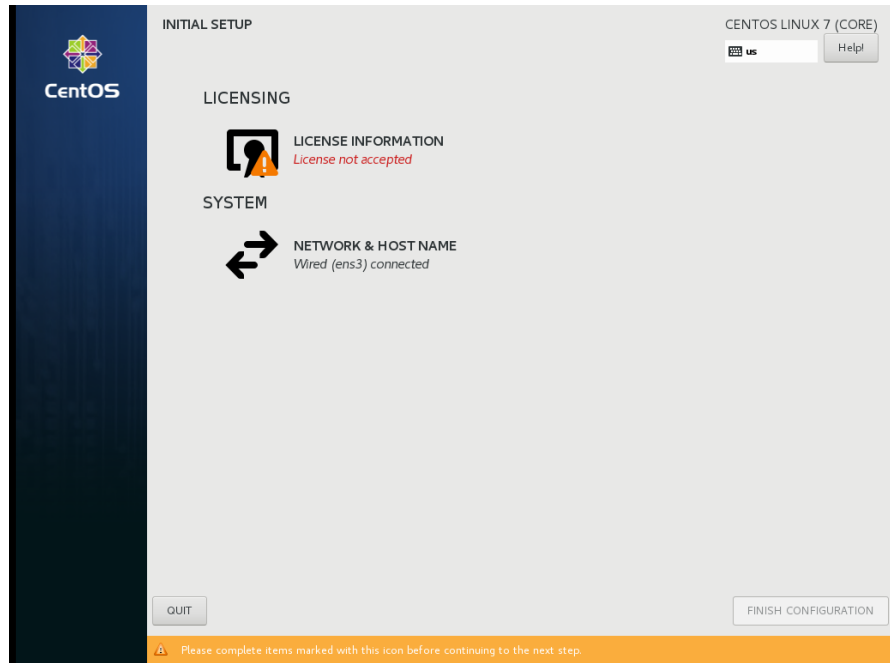
23. You should see the following grub screen displayed after the system restarts.



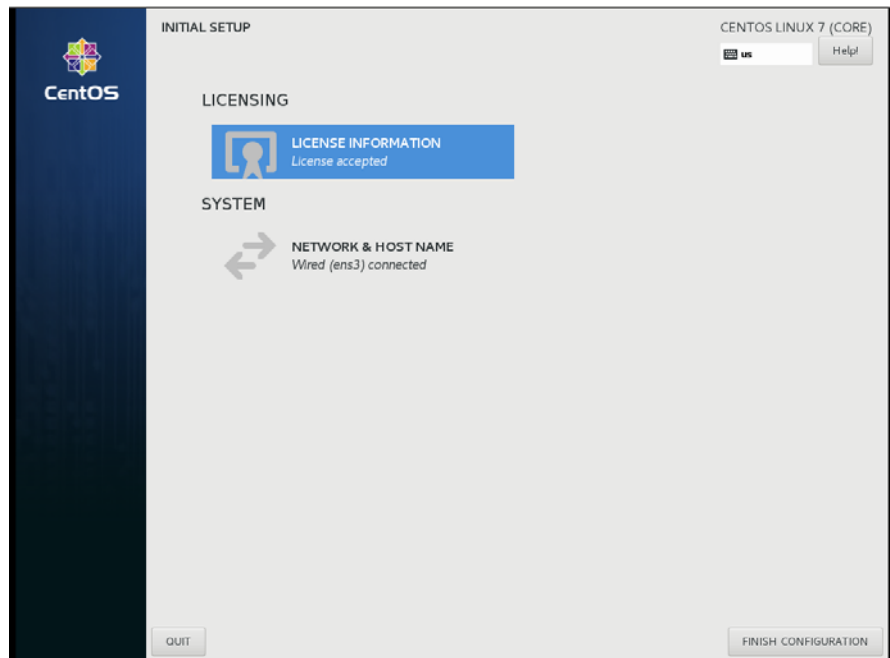
Press the **Enter** key or allow the grub screen to timeout to boot the newly installed system.

24. Once the system has almost fully booted, the boot process will pause and require you to accept the CentOS license agreement, as shown in the

following screen:



Click on the License Information icon. On the resulting screen check the I accept the license agreement checkbox at the bottom of the screen and then press the Done button at the top left. The following screen should now be displayed:



Finally, press the Finish Configuration button and allow the system to continue to boot up to the graphical login screen.

After the login screen appears, preliminary installation of CentOS is complete. Proceed to the next section to complete the CentOS installation and update.

5.1.2 Installing CentOS Updates

Install the disc labeled CentOS Updates Version 7.5. This contains the latest updates released by CentOS which have been validated by Concurrent Real-Time on RedHawk Linux. These updates are important to the proper operation of RedHawk Linux.

Execute the following instructions on the console or in a terminal window running as root.

1. Log in as root and take the system down to single-user mode:
 - a. If in GUI mode, right click on the desktop and select Open Terminal.
 - b. At the system prompt, type **init 1**.
 - c. Enter the root password at the rescue prompt to access the shell.
2. If the optical media did not mount automatically, execute the **mount** command appropriate for mounting your optical device.

NOTES

NOTE 1: A specific mount point may not have been created under **/run**, **/mnt** or **/media**.

If not, you can often identify the device file associated with your optical media device by looking for files matching the following patterns:

```
ls /dev/cd* /dev/dvd*
```

If these files are not present, you should examine the boot messages in **/var/log/messages** and look for your optical media device and find the associated **/dev** file.

Once located, you can mount the device with commands similar to the following:

```
[ -d /media/dvd ] || mkdir -p /media/dvd  
mount device-name /media/dvd -o ro
```

where *device-name* is the **/dev/** file you located.

NOTE 2: Do *not* mount the device on the **/mnt** or **/media** directories; you must use a subdirectory of one of these directories. Failure to follow this advice may cause the installation to abort.

3. Execute the following commands to install the update software, substituting the actual mount point used for your optical media disc device:

```
cd /path-to-actual-mount-point  
./install-updates
```

NOTE

If you cannot execute the **install-updates** script (it fails with Permission Denied), or if you attempt to execute it by launching it from a file browser and it immediately returns, the optical media may have been mounted with the **noexec** option.

Run the **mount** command (without arguments) and check the options. If **noexec** is present, remount the optical media using:

```
mount -o remount,exec mount-point
```

where *mount-point* is the directory name in the output of the previous mount command for that optical media. For example:

```
> mount | fgrep noexec
/dev/scd0 on /media/CentOS7.5-Updates type iso9660 (ro,noexec)

> mount -o remount,exec /media/CentOS7.5-Updates
```

4. The installation script will first ask you to confirm that you want to proceed with updating CentOS packages. Type **Y** and press **Enter** to continue.

The installation script will then ask if you wish to install Concurrent Real-Time's recommended set of updates for the CentOS distribution. Concurrent Real-Time recommends that you simply press **Enter** to install the full set of Concurrent Real-Time-recommended package updates.

Package installation and update now begins. No additional action is required of you during this step.

5. The next stage involves reading in package header information from each package on the Updates DVD and performing a package dependency transaction check. No action is required of you during this step.

```
root@ihawk:/run/media/root/CentOS 7.5 Updates x86_64
File Edit View Search Terminal Help
Installing updates:
Loaded plugins: fastestmirror, langpacks
Loading mirror speeds from cached hostfile
centos-updates-media | 3.1 kB 00:00
(1/2): centos-updates-media/group_gz | 166 kB 00:00
(2/2): centos-updates-media/primary_db | 3.1 MB 00:00
Resolving Dependencies
--> Running transaction check
--> Package 389-ds-base.x86_64 0:1.3.7.5-18.el7 will be updated
--> Package 389-ds-base.x86_64 0:1.3.7.5-19.el7_5 will be an update
--> Package 389-ds-base-libs.x86_64 0:1.3.7.5-18.el7 will be updated
--> Package 389-ds-base-libs.x86_64 0:1.3.7.5-19.el7_5 will be an update
--> Package PackageKit.x86_64 0:1.1.5-1.el7.centos will be updated
--> Package PackageKit.x86_64 0:1.1.5-2.el7.centos will be an update
--> Package PackageKit-command-not-found.x86_64 0:1.1.5-1.el7.centos will be updated
--> Package PackageKit-command-not-found.x86_64 0:1.1.5-2.el7.centos will be an update
--> Package PackageKit-glib.x86_64 0:1.1.5-1.el7.centos will be updated
--> Package PackageKit-glib.x86_64 0:1.1.5-2.el7.centos will be an update
--> Package PackageKit-gstreamer-plugin.x86_64 0:1.1.5-1.el7.centos will be updated
--> Package PackageKit-gstreamer-plugin.x86_64 0:1.1.5-2.el7.centos will be an
```

NOTE

If the update appears to stall for several minutes shortly after pressing the **Enter** key, it is very likely that the CentOS package update checking service has locked the RPM package database to check for any available CentOS package updates. Simply issue a **killall packagekitd** at a bash shell prompt to safely allow the installation to continue.

Once the package dependency transaction check has completed, updating of packages is executed. No action is required of you during this step.

```

root@ihawk:/run/media/root/CentOS 7.5 Updates x86_64
File Edit View Search Terminal Help
Transaction Summary
=====
Install  2 Packages
Upgrade 58 Packages

Total download size: 280 M
Downloading packages:
warning: /run/media/root/CentOS 7.5 Updates x86 64/Packages/389-ds-base-1.3.7.5-19.el7_5.x86_64.rpm: Header V3 RSA/SHA256 Signature, key ID f4a80eb5: NOKEY
Public key for 389-ds-base-1.3.7.5-19.el7_5.x86_64.rpm is not installed
-----
Total                               92 MB/s | 280 MB  00:03
Retrieving key from file:///etc/pki/rpm-gpg/RPM-GPG-KEY-CentOS-7
Importing GPG key 0xF4A80EB5:
  Userid      : "CentOS-7 Key (CentOS 7 Official Signing Key) <security@centos.org>"
  Fingerprint: 6341 ab27 53d7 8a78 a7c2 7bb1 24c6 a8a7 f4a8 0eb5
  Package     : centos-release-7-5.1804.el7.centos.x86_64 (@anaconda)
  From        : /etc/pki/rpm-gpg/RPM-GPG-KEY-CentOS-7
Running transaction check
Running transaction test
Transaction test succeeded
Running transaction
  Updating   : krb5-libs-1.15.1-19.el7.x86_64                               1/118
  
```

NOTE

While the messages displayed during package updates appear to indicate that package *downloading* is occurring, no actual network access is performed when using the Updates DVD.

- Once all package updating has completed, many new packages are then installed.

```

root@ihawk:/run/media/root/CentOS 7.5 Updates x86_64
File Edit View Search Terminal Help
Transaction Summary
=====
Install 130 Packages (+5 Dependent packages)

Total download size: 87 M
Installed size: 227 M
Downloading packages:
-----
Total                               46 MB/s | 87 MB  00:01
Running transaction check
Running transaction test
Transaction test succeeded
Running transaction
  Installing : system-config-users-1.3.5-2.el7.noarch                       1/135
  Installing : system-config-users-docs-1.0.9-6.el7.noarch                  2/135
  Installing : libquvi-scripts-0.4.10-3.el7.noarch                        3/135
  Installing : jai-imageio-core-1.2-0.14.20100217cvs.el7.noarch            4/135
  Installing : jzlib-1.1.1-6.el7.noarch                                    5/135
  Installing : sac-1.3-17.el7.noarch                                       6/135
  Installing : system-config-keyboard-base-1.4.0-4.el7.noarch              7/135
  Installing : system-config-keyboard-1.4.0-4.el7.noarch                  8/135
  Installing : OpenIPMI-modalias-2.0.23-2.el7.x86_64                      9/135
  Installing : batik-1.8-0.12.svn1230816.el7.noarch                       10/135
  Installing : isch-0.1.50-5.el7.noarch                                    11/135
  
```


7. Upon completion of installation the entire update has completed.

```

root@ihawk:/run/media/root/CentOS 7.5 Updates x86_64
File Edit View Search Terminal Help
luna.noarch 0:0.13-0.el7
usermode-gtk.x86_64 0:1.111-5.el7
vim-X11.x86_64 2:7.4.160-4.el7
vte3.x86_64 0:0.36.5-1.el7
xchat.x86_64 1:2.8.8-23.el7
xinetd.x86_64 2:2.3.15-13.el7
xmlgraphics-commons.noarch 0:1.5-3.el7
xz-libs.i686 0:5.2.2-1.el7
yp-tools.x86_64 0:2.14-5.el7
ypbind.x86_64 3:1.37.1-9.el7
zlib.i686 0:1.2.7-17.el7

Dependency Installed:
gpm.x86_64 0:1.20.7-5.el7                libntlm.x86_64 0:1.3-6.el7
libsexy.x86_64 0:0.1.11-23.el7          rrdtool.x86_64 0:1.4.8-9.el7
system-config-users-docs.noarch 0:1.0.9-6.el7

Complete!

All updates have been applied.

Please contact Concurrent Real-Time technical support if you had any
problems during this installation (http://www.concurrent-rt.com/support
or 1-800-245-6453).

```

8. When the update completes, execute the following commands:

```
cd ..
eject
```

NOTE: If there is more than one media device, you must specify the device to be ejected; e.g., **eject /dev/sr1**.

9. Remove the disc from the optical media drive and store.
10. Type “reboot” at the system prompt and verify that the new CentOS kernel boots.
11. Continue with the steps in the next section to install RedHawk Linux.

5.2 Installing RedHawk Linux

After completing the installation of CentOS in the previous section, perform the following steps to install RedHawk Linux:

1. Log in as root and take the system down to single-user mode:

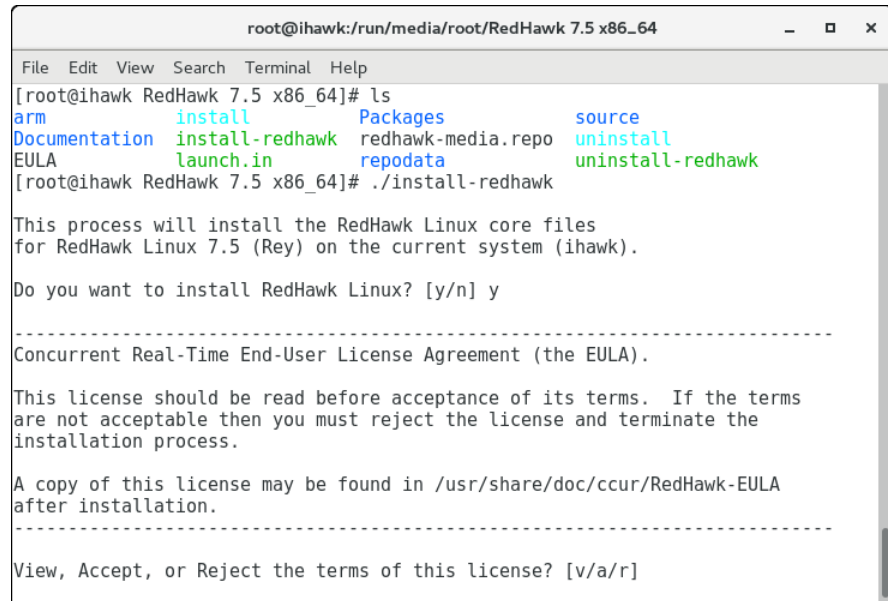
NOTE

During each user’s first graphical log in, the user will be presented with various screens to configure localization, create users, connect to external resources, etc. before they will be able to use the system.

- a. If in GUI mode, right click on the desktop and select Open Terminal.
- b. At the system prompt, type **init 1**.

- c. Enter the root password at the rescue prompt to access the shell.
2. Locate the disc labeled “RedHawk Linux Version 7.5” appropriate to your system’s architecture and insert it into the optical media drive.
3. If the device does not mount automatically, execute the **mount** command appropriate for your optical media device.
4. Execute the following commands to install RedHawk Linux, substituting the actual mount point used for your optical media device if necessary:

```
cd /path-to-actual-mount-point
./install-redhawk
```



```

root@ihawk:/run/media/root/RedHawk 7.5 x86_64
File Edit View Search Terminal Help
[root@ihawk RedHawk 7.5 x86_64]# ls
arm          install      Packages     source
Documentation install-redhawk redhawk-media.repo  uninstall
EULA        launch.in   repodata     uninstall-redhawk
[root@ihawk RedHawk 7.5 x86_64]# ./install-redhawk

This process will install the RedHawk Linux core files
for RedHawk Linux 7.5 (Rey) on the current system (ihawk).

Do you want to install RedHawk Linux? [y/n] y

-----
Concurrent Real-Time End-User License Agreement (the EULA).

This license should be read before acceptance of its terms. If the terms
are not acceptable then you must reject the license and terminate the
installation process.

A copy of this license may be found in /usr/share/doc/ccur/RedHawk-EULA
after installation.

-----
View, Accept, or Reject the terms of this license? [v/a/r]
```

NOTES

- NOTE 1: Special instructions are displayed during the installation that may require appropriate action, such as video card installation and configuration. Follow the on-screen instructions until the installation script completes.
- NOTE 2: The installation script will prompt you to accept or reject the End User License Agreement. You can view the agreement by entering “v” at the prompt.
- NOTE 3: While the messages displayed during RedHawk installation appear to indicate that package *downloading* is occurring, no actual network access is performed when using the RedHawk DVD.
- NOTE 4: It is normal for the installation script to appear to be stalled near the end of installation. It is performing several background operations that are required and the script must not be interrupted.
- NOTE 5: Near the end of installation you may be presented with dialogs indicating that the system cannot get an exclusive lock on the packaging back end. These dialogs are erroneous and may be closed and ignored.

- The following messages will be displayed once all RedHawk package installation has completed successfully.

```

root@ihawk:/run/media/root/RedHawk 7.5 x86_64
File Edit View Search Terminal Help
ccur-strace.x86_64 2:4.22-7.5 20180517
ccur-vmlinux.x86_64 0:7.5-20180517
ccur-vmlinux-debug.x86_64 0:7.5-20180517
ccur-vmlinux-kdump.x86_64 0:7.5-20180517
ccur-vmlinux-prt.x86_64 0:7.5-20180517
ccur-vmlinux-prt-debug.x86_64 0:7.5-20180517
ccur-vmlinux-prt-trace.x86_64 0:7.5-20180517
ccur-vmlinux-trace.x86_64 0:7.5-20180517
ccur-vtop.x86_64 0:7.5-20180517
ccur-xtrace.x86_64 0:7.5-20180517

Replaced:
centos-indexhtml.noarch 0:7-9.el7.centos
centos-logos.noarch 0:70.0.6-3.el7.centos

Complete!

The RedHawk Linux installation is complete.

Please contact Concurrent Real-Time technical support if you had any
problems during this installation (http://www.concurrent-rt.com/support
or 1-800-245-6453).

[root@ihawk RedHawk 7.5 x86_64]#

```

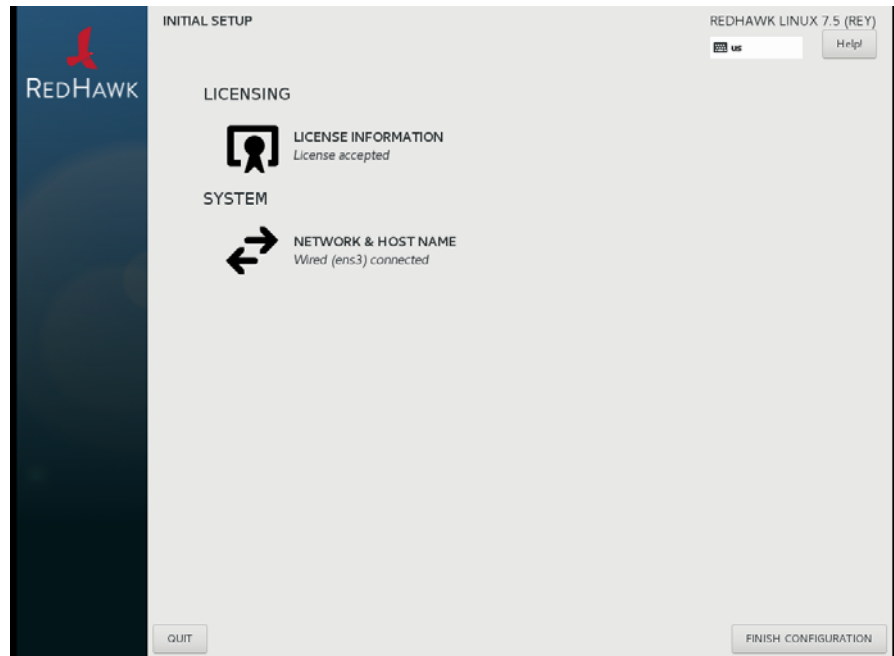
- When the installation completes, execute the following commands:


```

cd ..
eject

```
- Remove the disc from the drive and store.
- Reboot the system choosing a new RedHawk kernel and verify that the system starts booting properly.
- Once the system has almost fully booted, the boot process will again pause and allow you to accept or reject the RedHawk license agreement, as

shown in the following screen:



If you wish to accept the RedHawk license agreement simply press the **Finish Configuration** button and allow the system to continue to boot up to the graphical login screen.

10. Continue with the next section if an RCIM is to be installed. Otherwise, proceed to the following section to install Frequency-Based Scheduler (FBS).

5.3 Installing the RCIM

The following serves as an installation checklist for installing an RCIM board in an iHawk system. If an RCIM is not installed in your iHawk system, it should be installed now. See the *Real-Time Clock and Interrupt Module (RCIM) User's Guide* for complete details. The PDF file for this manual is available for viewing by clicking on the “Documents” icon on the desktop.

5.3.1 Quick Hardware Installation Checklist

1. Before installing the RCIM, determine if you will be using the RCIM to accept or deliver external interrupts and the mode in which the RCIM will run (see “RCIM Connection Modes” on page 56).
2. Verify that the `ccur-rcim` RPM has been installed by executing the command `rpm -q ccur-rcim`. The system will inform you if it is not installed. It is a standard package in the RedHawk installation.
3. Power down the system and remove all power cords.

NOTE

Concurrent Real-Time, Inc. strongly recommends that you use an antistatic wrist strap and a conductive foam pad when installing and removing printed circuit boards.

4. Open the case of your system and identify the PCIe slot (RCIM III) or PCI slot (RCIM II or RCIM I) where you want the RCIM to reside. In general, it is best for the RCIM to be configured in a slot where minimal or no contention with other devices occurs and at the highest IRQ priority possible. For more information, refer to the *iHawk Optimization Guide*, publication number 0898011. The PDF file for this manual is available for viewing by clicking on the “Documents” icon on the desktop.
5. Insert the RCIM into the selected PCI slot and lock it down.
6. If this is to be part of an RCIM chain, attach the synchronization cable as required (see the *Real-Time Clock and Interrupt Module (RCIM) User’s Guide* manual for complete details).
7. If you have the optional GPS module, attach the antenna lead and mount the antenna. The antenna should be mounted on the rooftop or in an open area.
8. Close the case and reconnect all power cords.
9. Power up the system and verify the system boots up properly. Refer to the RCIM guide for configuration options.

5.3.2 Verifying RCIM Operation

1. To check that the RCIM is operating correctly, perform the following:

```
cat /proc/driver/rcim/status
```

You should see an output similar to that shown below:

```
RCIM-III board 0 is at revision 1 eeprom 2.0.
RCIM firmware version 11
This is a standalone (isolated) rcim.
Has IRQ 59 and major number 243
Board options: none
```

NOTE

The RCIM board may be either RCIM-I, RCIM-II or RCIM-III and the revision, eeprom, and IRQ numbers may differ.

2. To view the current RCIM configuration, issue the following command:

```
cat /proc/driver/rcim/config
```

You should see output similar to the following:

```
h/Not_Configured, sync/ptr, clock
pig0|out0, pig1|out1, pig2|out2, pig3|out3, pig4|out4, pig5|out5,
pig6|out6, pig7|out7, pig8|out8, pig9|out9, pig10|out10, pig11|out11,
```

```
none|di0/f, none|di1/f, none|di2/f, none|di3/f, none|di4/f, none|di5/f,
none|di6/f, none|di7/f, none|di8/f, none|di9/f, none|di10/f, none|di11/f,
eti0/f, eti1/f, eti2/f, eti3/f, eti4/f, eti5/f,
eti6/f, eti7/f, eti8/f, eti9/f, eti10/f, eti11/f,
```

5.3.3 Installing NTP Updates for GPS Module

If you installed an RCIM model equipped with the optional GPS module, the **ccur-ntp** RPM is required for its use. If you do not have an RCIM board with GPS module, skip to section 5.4.

1. The **ccur-ntp** RPM is available via Concurrent Real-Time's Software Repository system and it is also included on the "RedHawk NTP Version 7.5" product media that was included with your system. Execute the following steps to install this RPM:
 - d. Mount the "RedHawk NTP Version 7.5" product media and `cd` to the mounted directory or download the **ccur-ntp** RPM from Concurrent Real-Time's web site as described in section 10.2.2 on page 68.
 - e. Install the RPM via the following command:

```
# rpm -Uvh ccur-ntp*.rpm
```

2. After your system is completely installed, refer to the *Real-Time Clock and Interrupt Module (RCIM) User's Guide* for instructions for configuring ntp.

5.4 Installing Frequency-Based Scheduler (FBS) Software

FBS is an optional package to RedHawk Linux. If you will be using FBS, install it at this time by performing the following steps:

1. With RedHawk Linux Version 7.5 running, log in as root and take the system down to single-user mode.
2. Locate the disc labeled "RedHawk FBS Version 7.5" appropriate to your system's architecture and insert it into the optical media drive.
3. If the optical media disc device does not mount automatically, execute the **mount** command; for example:

```
mount /media/dvd
```

4. To install, execute the following commands:

```
cd /path-to-actual-mount-point
./install-fbs
```

Follow the on-screen instructions until the installation script completes.

5. When the installation completes, execute the following commands:

```
cd ..
eject
```

6. Remove the disc from the optical media drive and store.
7. Exit single-user mode (Ctrl-D).

5.5 Installing Additional RedHawk Products

If you will be installing any additional RedHawk products, do so now. Refer to the products' documentation for installation instructions.

5.6 Installing RedHawk Updates from Disc

Discs labeled "RedHawk Update Disc" include updates to RedHawk and its products. If a RedHawk Updates disc is provided, install it now.

1. Ensure that the system is in multi-user mode.
2. Locate the disc labeled "RedHawk Update Disc" appropriate to your system's architecture, insert it into the drive.
3. If the disc device does not mount automatically, execute the **mount** command; for example:

```
mount /media/dvd
```

4. Execute the following commands to install the RedHawk updates included on the disc:

```
cd /path-to-actual-mount-point  
./install-updates
```

When the installation is complete, the Main window for Concurrent Real-Time's Network Update Utility (NUU) displays, listing product updates that complete your installation of RedHawk. Depending on the installation state of your Concurrent Real-Time products, the NUU Main window may show software modules which are out of date.

Before installing any modules, check for NUU updates separately. Apply any NUU updates and then restart NUU before applying any other updates.

NOTE

You should disable the external CentOS repositories (Base, Updates and Contrib) before continuing. Select **Edit Configuration** in the **Repositories** menu to disable these repositories.

With NUU up-to-date, from the NUU Main window, click on the **Select Update of All Out-of-Date** button, then click on the **Apply Actions** button to install all listed product updates.

5. When the installation completes, execute the following commands:

```
cd ..  
eject
```

6. Remove the disc from the optical media drive and store.

7. If there are more update discs, repeat these steps to install all updates.
8. Reboot the system choosing the updated RedHawk kernel and verify that the system boots properly.
9. Check for additional RedHawk updates available through the RedHawk Updates web site as outlined in the following section.

5.7 Installing RedHawk Updates from the Updates Web Site

1. Additional updates may have been issued (that are not included on any “RedHawk Update Disc” you may have received). They should be downloaded and installed now. Refer to “Software Updates” on page 67 for details.
2. When complete, or if no updates are available, reboot the system choosing the new RedHawk kernel and verify that the system boots properly.

6.0. Upgrade Procedures

Use the upgrade procedures provided here only if you are upgrading from Version 7.0, 7.2 or 7.3 to Version 7.5.

If generating or regenerating a RedHawk 7.5 system, migrating a system from Version 6.x, 5.x or 4.x or earlier, or converting a system from 32-bit to 64-bit, follow the steps in “Installation Procedures” on page 10.

NOTE: Resources to assist users supplying their own Red Hat software are available in the Concurrent Real-Time Software Documentation Library:

<http://redhawk.concurrent-rt.com/docs/document.cgi?document=1Linux/1RedHawk/7.5/RedHat>

Review the following points before upgrading the software:

- It is recommended that the installer first read through the entire procedure once before actually performing the upgrade.
- It is **strongly recommended** that installation and updates of software be performed in single-user mode to guard against the possibility of corrupting a running application.
- Install all available upgrades. No quality claims are made by Concurrent Real-Time unless all appropriate version levels of all RedHawk Linux software are installed.
- The media in use is accessed at various times and must be kept in the drive during the installation until you are instructed to install different media.
- Prior to upgrade, remove any floppy media that may have been left in the machine.
- The CentOS kernel should be running when upgrading to RedHawk Linux Version 7.5.

6.1 Pre-Upgrade Procedure

- Before beginning the upgrade procedure, care should be taken to avoid overwriting and thereby destroying files or filesystems that you cannot restore. Identify and back up all important files to a safe location, preferably on a system other than the one on which you are performing the upgrade. For maximum safety, it is recommended that you disconnect all disks that you do not want the upgrade process to accidentally overwrite.
- On systems with multiple CentOS installations, identify all the appropriate mount points and partitions so that you can correctly answer questions from the installer during the upgrade process.

To identify the partition that contains the root file system to be upgraded, boot the installation to be upgraded into run level 1 and issue the **mount** command. For example:

```
[root@ihawk ~]$ mount | grep 'on / type'
/dev/sda2 on / type ext3 (rw)
```

In this example, the root partition on which this CentOS was installed is **/dev/sda2**.

Resolve any discrepancies before continuing with the upgrade.

- Avoid adding or removing drives to a system before or after an install or upgrade to prevent having difficulties with grub, the BIOS, and the operating system correctly identifying various drives and partitions.
- If you cannot reboot your system after the upgrade, refer to the section “How to Use Linux Rescue” on page 56.

6.2 RedHawk Pre-Upgrade Steps

Upgrading a system from RedHawk 7.x to RedHawk 7.5 is a fairly straightforward process, however some manual steps need to be performed before you can begin the upgrade.

NOTE

RedHawk 7.5, unlike some previous versions of RedHawk, does *not* require the use of the original CentOS Enterprise Linux 7.5 installation disc to perform an upgrade.

To upgrade the system follow these steps, performing all commands as the *root* user.

1. Relocate several CentOS and RedHawk yum repository files that will no longer be needed with RedHawk 7.5 as these may confuse NUU:

```
# mkdir /etc/yum.repos.old
# cd /etc/yum.repos.d
# mv *redhawk*7.* /etc/yum.repos.old
```

Note that after the upgrade has completed successfully you can safely remove the `/etc/yum.repos.old` directory as these repository files can no longer be used with RedHawk 7.5.

2. Update the **systemd** (1) service manager. Note that the update instructions differ depending on whether your system has access to the internet.

If the system to be upgraded has access to the internet, issue the following command and skip to next numbered instruction.

```
# yum update systemd
```

If the system does not have access to the internet, follow these steps:

- a. Install the Centos 7.5 update media and verify it is mounted. If the optical media did not mount automatically, execute the **mount** (8) command appropriate for mounting your optical device.
- b. Create a new file in the `/etc/yum.repos.d` directory with the text that follows and name the file `dvd-update.repo`. Note that the path in the `baseurl=` line needs to match the path where the Centos 7.5 media is mounted. The path in this example is the one that the automounter uses. The mount path can be verified via the **mount** (8) command.

```
[dvd-update]
name=dvd-update
baseurl="file:///run/media/root/CentOS 7.5 Updates x86_64"
```

```
enabled=1
gpgcheck=0
```

- c. Update the systemd service manager from the Centos 7.5 update media.

```
# yum --disablerepo='*' \
  --enablerepo=dvd-update update systemd
```

- d. Remove the temporary repo file created:

```
# rm /etc/yum.repos.d/dvd-upgrade.repo
```

3. If the system console is using an NVIDIA graphics card, you must rename the X Server's `xorg.conf` file so that it will not conflict with the *nouveau* driver in the CentOS kernel:

```
# mv -f /etc/X11/xorg.conf /etc/X11/xorg.conf.old
```

Once the system has been upgraded to RedHawk 7.5 a new `xorg.conf` file will be generated. If you previously made manual changes to the `xorg.conf` file you may wish to restore it to the version saved above after the upgrade is complete.

4. Configure the system to boot a CentOS kernel by default using the `ccur-grub2` command and reboot the system. See the `ccur-grub2(1)` man page for more information.
5. After the system reboot, remove the following packages from the system. Note that in some 7.x releases there is no `ipa-python` package installed. In that case the error message can be ignored.

```
# rpm -e ipa-client ipa-admintools ipa-server ipa-python
```

6. On some systems there may be a dependency conflict with the `libreoffice` and `unoconv` software packages. If you encounter this conflict during the installation of updates, the packages can be removed with the command:

```
# rpm -e `rpm -qa |grep libreoffice` unoconv
```

6.3 Upgrade RedHawk to RedHawk 7.5

Once the pre-upgrade steps have been completed in the previous section, the rest of the upgrade steps are identical to that of a full installation proceeding *after* the base CentOS has been installed.

Continue with the full installation instructions starting with section **Installing CentOS Updates** on page 26 and continuing through section **Installing RedHawk Updates** from the Updates Web Site on page 36. Once you complete those instructions the upgrade is complete.

NOTE

Installing the CentOS 7.5 Updates on an existing 7.0, 7.2 or 7.3 system will produce a large number of warnings throughout the process; these warnings are solely information and can be safely ignored.

7.0. NVIDIA Graphics Configuration

The Unified NVIDIA Linux Display Driver (version 390.25) is included in the RedHawk Linux installation and built automatically for all pre-built and custom RedHawk Linux kernels. The RedHawk installer probes for the type and model of video adapters present in the system, and recommends installing the unified `ccur-nvidia-glx` rpm when it detects one or more NVIDIA video cards present.

See sections **7.1 Supported NVIDIA GPUs** and **7.2 Multiple NVIDIA Video Card Considerations** for more information on NVIDIA driver compatibility.

After you have completed the basic installation for your display configuration, you can edit the resulting `/etc/x11/xorg.conf` for final adjustments.

7.1 Supported NVIDIA GPUs

If the `ccur-nvidia-glx` rpm has been installed on your system, you can view the list of all NVIDIA GPUs supported by the 390.25 driver in “Appendix A” in the following file:

```
/usr/share/doc/ccur-nvidia-glx-390-25/README.txt
```

Alternatively, you can examine the list of supported GPUs for driver 390.25 at the NVIDIA web site which is located at:

<http://www.nvidia.com>

Note that if your NVIDIA GPU is not supported by the 390.25 driver, you will have to do one of the following:

- replace the existing older NVIDIA card in your system with a newer NVIDIA card that is supported by the 390.25 driver
- go to the NVIDIA web site mentioned above and download a legacy NVIDIA driver that supports your NVIDIA card, and follow the installation instructions described on that driver’s web page

NOTE

The NVIDIA driver that is provided with RedHawk installations has been modified to reduce jitter on shielded CPUs in a real-time environment. Therefore, if you choose to download and use a legacy NVIDIA driver directly from the NVIDIA web site, you may observe interference on shielded CPUs during graphics activity.

7.2 Multiple NVIDIA Video Card Considerations

Note that you may not use the unified 390.25 Driver and a legacy NVIDIA Linux Display Driver together at the same time.

If you have a system with a mix of legacy-only and unified-only NVIDIA video cards, you will only be able to use one set of cards (legacy or unified) at any single point in time.

It is highly recommended that you physically remove the legacy or unified video cards that you are not using so that they do not interfere with the card(s) that you are planning to use. Failure to do so may lock up your system or X11 session.

If you have a mixed video card system as described here, it is recommended that you upgrade your legacy NVIDIA video cards to unified video cards and use the unified 390.25 driver as your display driver.

7.3 Display Configurations

Displays can be configured as a single monitor with one or more controlling keyboards and mice, or together as multiple monitors with one or more controlling keyboards and mice.

Screens can be configured left, right, above, or below each other in any fashion. The differences in how the screens operate and interact are described in this section.

Use the **nvidia-settings** utility to create all multiple display configurations. See section **7.5 Using nvidia-settings**.

7.3.1 Single

Single mode is a single X Screen displayed as a single Desktop on a single monitor.

Use the **nvidia-xconfig** utility to create a single NVIDIA display. See section **7.4 Using nvidia-xconfig**.

7.3.2 Xinerama

Xinerama mode enables multiple X Screens displayed as a single Desktop spanning multiple monitors. This mode has the following characteristics:

- A separate X Screen for each display is used.
- The mouse moves freely between displays.
- If you maximize a window, it fills a single display.
- You can drag objects from one display to another.
- This mode causes a little extra overhead for X.

Xinerama requires entries in **xorg.conf** to describe the layout of the screens to the X server and the setting of the server flag, "Xinerama" "1".

Xinerama is done by the X server and does not require the use of NVIDIA, but only configurations based on NVIDIA and the **nvidia-settings** utility are covered in this document.

7.3.3 MultiDesktop

MultiDesktop mode enables multiple X Screens displayed as separate Desktops on each monitor. This mode has the following characteristics:

- A separate X Screen for each display is used.
- The mouse moves freely between displays.
- If you maximize a window, it fills a single display.

- You can *not* drag objects from one display to another.
- This causes a little extra overhead for X.

This requires entries in **xorg.conf** to describe the layout of the screens to the X server and the setting of the server flag, “Xinerama” “0”, or by the omission of the Xinerama server flag.

MultiDesktop is done by the X server and does not require the use of NVIDIA, but only configurations based on NVIDIA and the **nvidia-settings** utility are covered in this document.

7.3.4 Twinview

Twinview mode allows you to display a single Desktop that spans two monitors or to clone the output and display a duplicated Desktop on each monitor. This mode has the following characteristics:

- The mouse moves freely between displays.
- If you maximize a window, it expands across both displays unless you:
 - set a special flag which emulates the behavior of Xinerama
 - operate in clone mode
- In clone mode, the monitors display exactly the same image.
- You can drag objects from one display to another unless you are operating in clone mode.
- Twinview mode causes no extra overhead for X.

The NVIDIA driver conceals all information about multiple display devices from the X server; as far as X is concerned, there is only one X Screen.

All display devices share one frame buffer. Thus, all the functionality present on a single display (e.g., accelerated OpenGL) is available with Twinview.

Twinview only works on a single GPU with multiple heads. It will not work between separate cards or heads with different BusIDs (like Xinerama can).

The “Twinview” and “metamodes” options must be set in the **xorg.conf** Screen section.

See `/usr/share/doc/ccur-nvidia-glx-390-25/README.txt` for a detailed discussion on Twinview.

7.3.5 Twinview-Xinerama

This mode enables multiple X Screens to join Twinview Screens as a single Desktop on three or more monitors.

The “Twinview” and “metamodes” options must be set in the **xorg.conf** Screen section for each supported device.

This also requires entries in **xorg.conf** to describe the layout of the Screens to the X server and the setting of the server flag, “Xinerama” “1”.

The definition of the Xinerama server flag to X will override the ability of the Twinview Screen to emulate Xinerama.

If you maximize a window in the Twinview Screen, it expands across both displays in the Twinview Screen if not in clone mode.

If you maximize a window in a non-Twinview Screen, it fills that display.

7.3.6 Twinview-MultiDesktop

This mode enables multiple X Screens to join Twinview Screens as separate Desktops on three or more monitors.

The “Twinview” and “metamodes” options must be set in the **xorg.conf** Screen section for each supported device.

This also requires entries in **xorg.conf** to describe the layout of the Screens to the X server and the setting of the server flag, “Xinerama” “0”, or by the omission of the Xinerama server flag.

The definition of the Xinerama server flag to X will override the ability of the Twinview Screen to emulate Xinerama.

If you maximize a window in the Twinview Screen, it will expand across both displays in the Twinview Screen if not in clone mode.

If you maximize a window in a non-Twinview Screen, it will fill that display.

7.4 Using nvidia-xconfig

You must create **/etc/X11/xorg.conf** using the **nvidia-xconfig** utility before using your system with the nvidia driver.

The **nvidia-xconfig** utility will generate some superfluous entries which you may choose to remove. See the example **xorg.conf** file in section 7.6 for reference.

Follow this procedure exactly to generate the file:

1. Read sections 7.0. - 7.3 and complete any actions required.
2. Reboot to runlevel 3.
3. Move **/etc/X11/xorg.conf** to **/etc/X11/xorg.conf.orig**:

```
mv -i /etc/X11/xorg.conf /etc/X11/xorg.conf.orig
```
4. Run the **nvidia-xconfig** utility (**/usr/bin/nvidia-xconfig**):

```
nvidia-xconfig
```
5. Reboot to runlevel 5.

See the **nvidia-xconfig(1)** man page for details about using **nvidia-xconfig**.

7.5 Using nvidia-settings

The **nvidia-settings** utility should be used to configure any of the multidisplay configurations described in section 7.3, and is the preferred method for tuning single display settings.

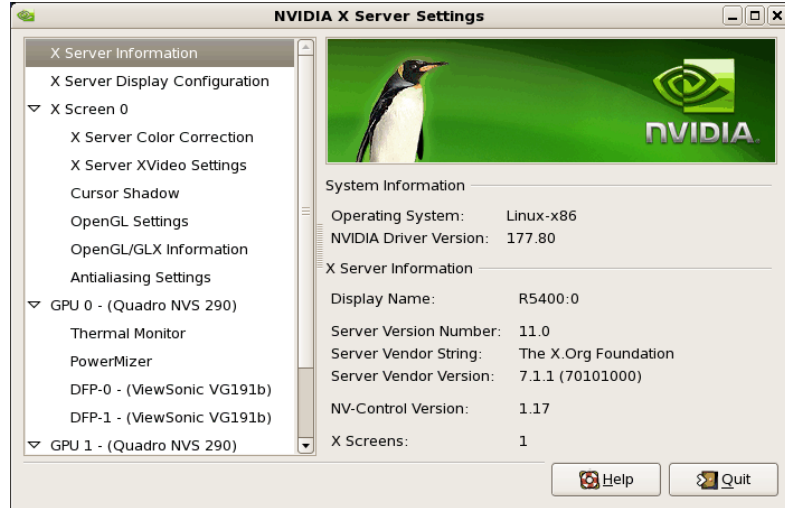
Before using **nvidia-settings**, complete the **nvidia-xconfig** procedure outlined in section 7.4. Failure to do so may result in poor or unstable performance.

See the `nvidia-settings(1)` man page for details about using `nvidia-settings`.

1. To start the `nvidia-settings` utility, issue following the command:

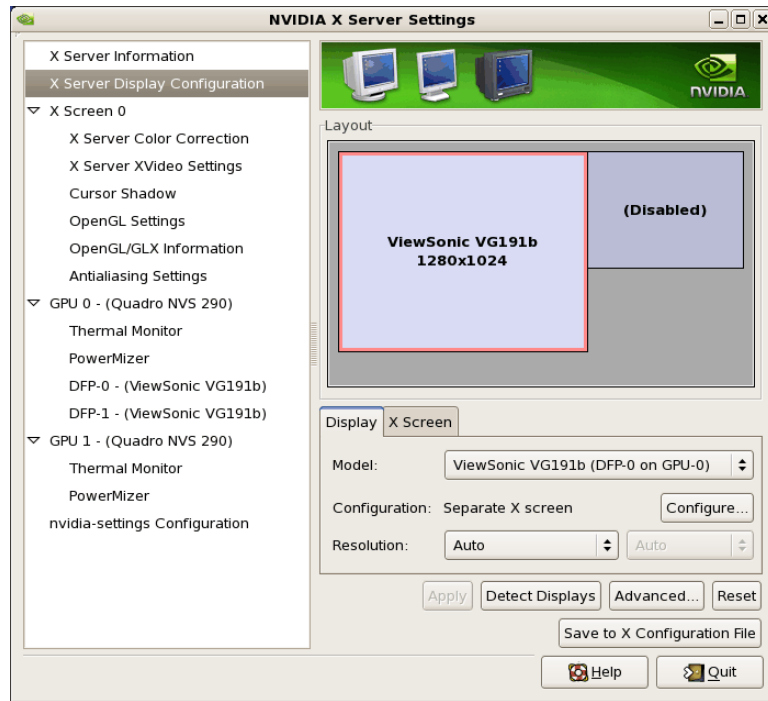
nvidia-settings

The GUI will start:



Here we see that we are viewing “X Server Information”, as indicated by the list of options on the left.

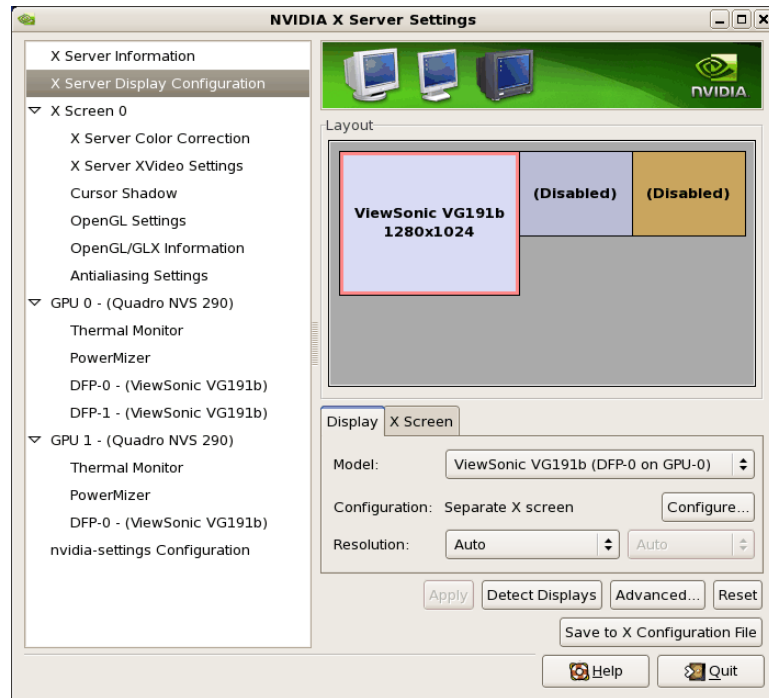
2. To create a new “X Server Display Configuration” select that option from the list on the left as shown below:



In the Layout window, we see a graphical depiction of the number of displays detected and configured. Notice that the large box is the primary monitor already configured by **nvidia-xconfig**. The smaller box to the right (Disabled) is a display that has not yet been configured.

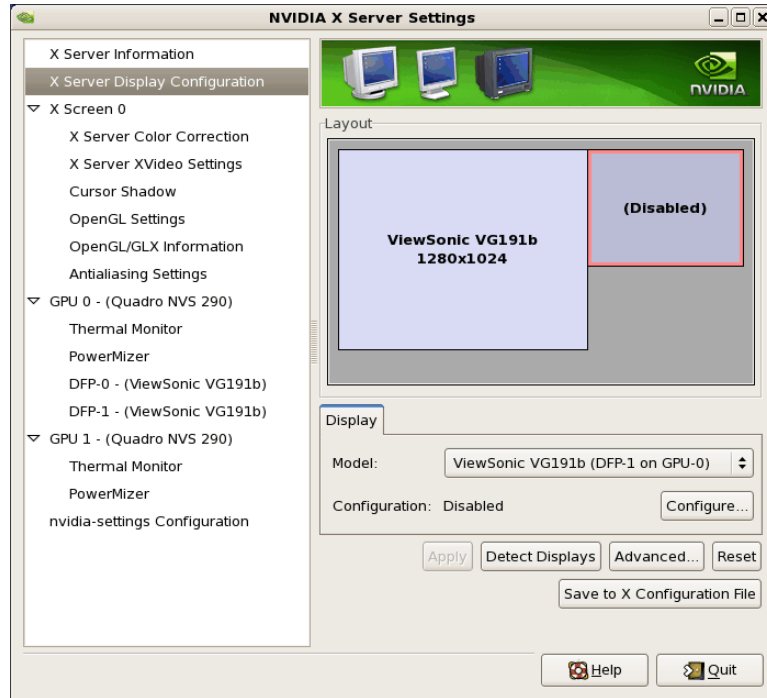
Click on the **Detect Displays** button if there are other monitors connected that are not shown in the Layout window.

Below is what the Layout window would look like if we detected a third monitor:

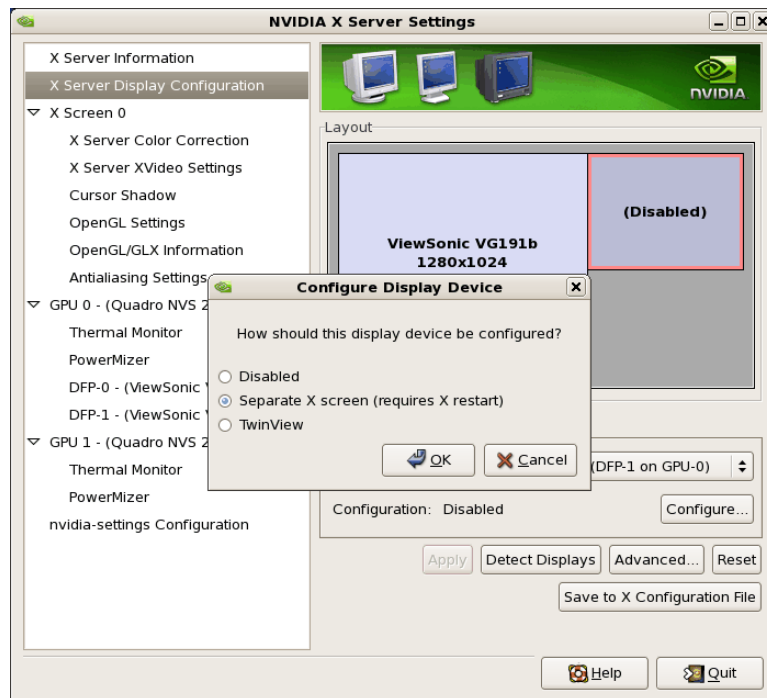


3. To configure two detected displays as a MultiDesktop, we would select the second monitor in the Layout window by clicking on it. We can see the

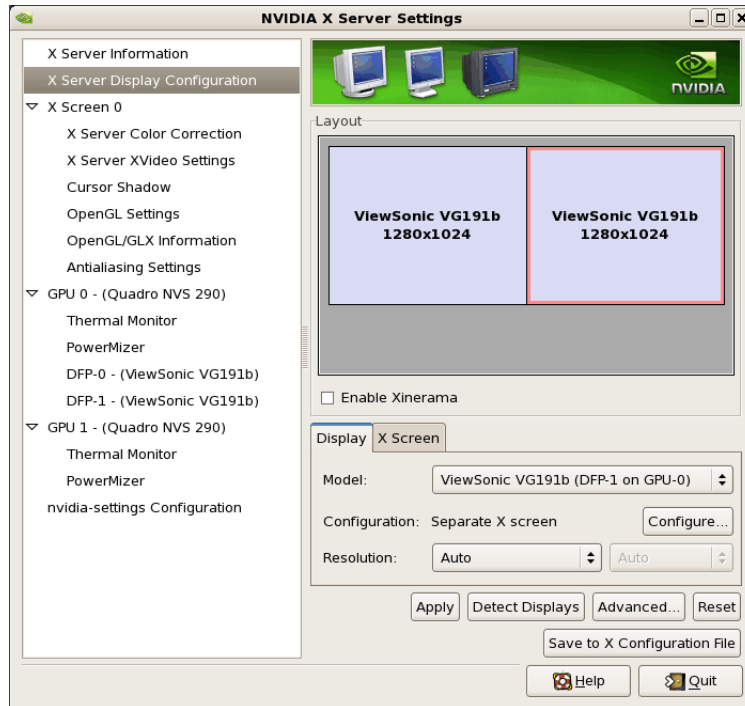
second monitor is selected for configuration by the red outline around the box:



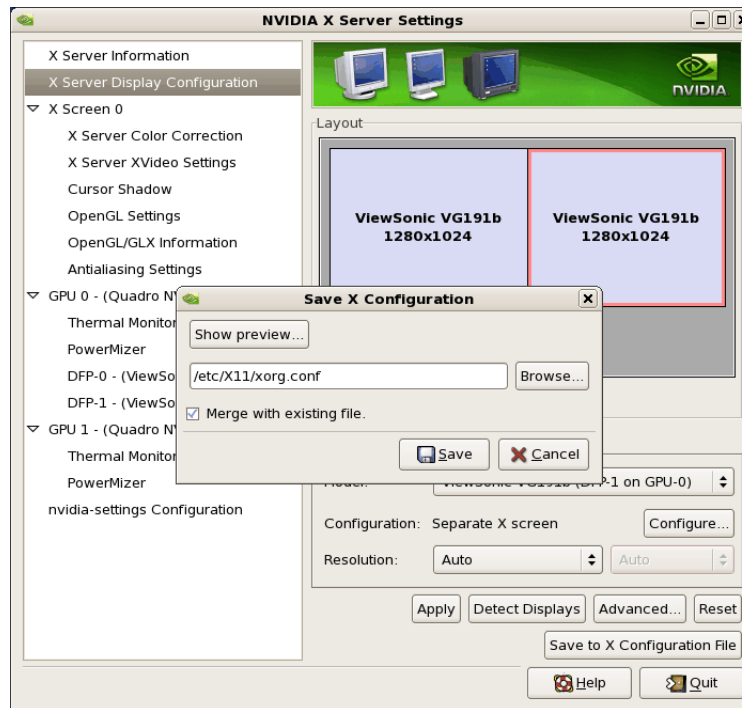
4. Click on the **Configure** button below the Layout window and select the “Separate X screen” option, then click **OK**:



- If we wanted to enable Xinerama we could do so at this point by selecting the “Enable Xinerama” check box below the Layout window:

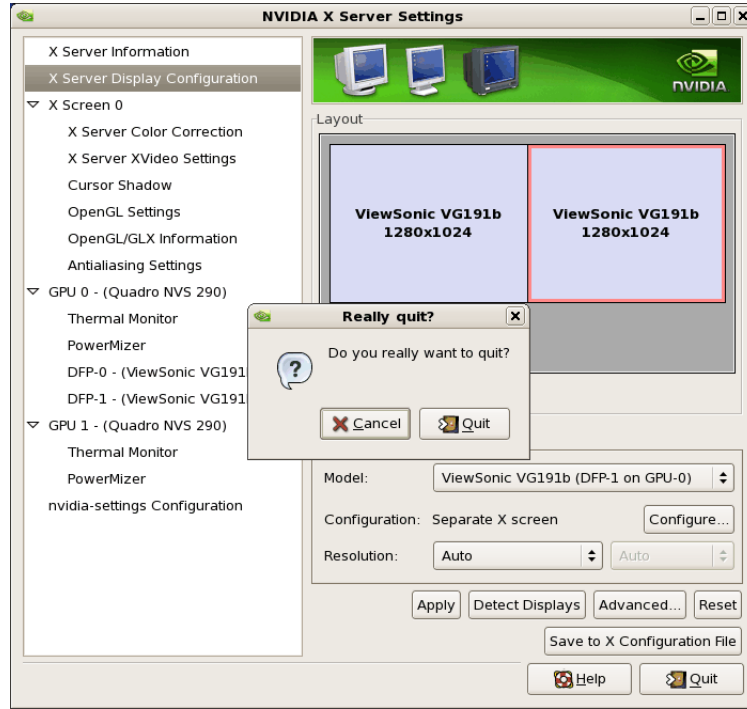


- To save the configuration to `xorg.conf`, click on the Save to X Configuration File button near the bottom of the GUI:



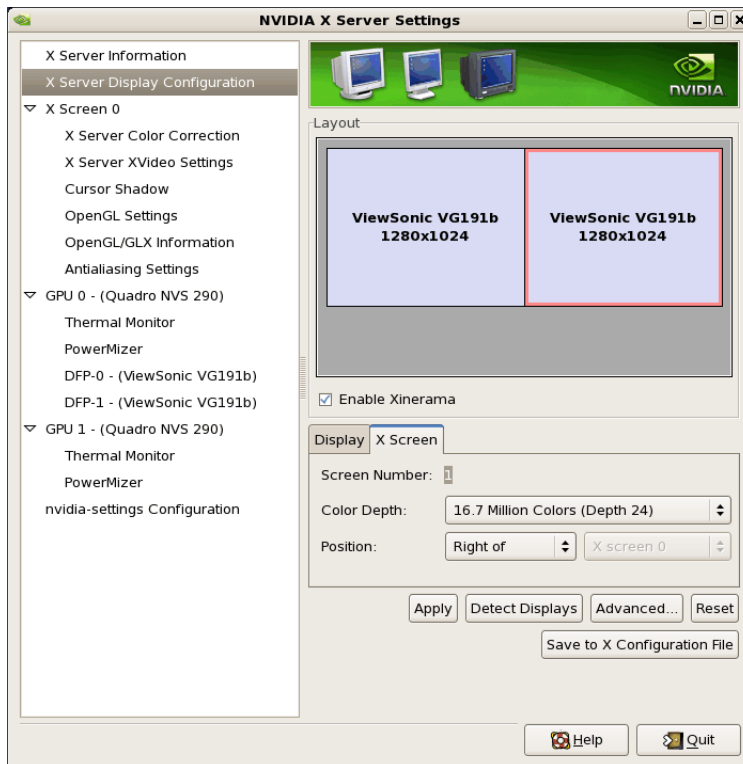
Then click Save on the Save X Configuration dialog box as shown above. (Always leave the Merge with existing file box checked).

- After you have saved the new `xorg.conf`, click on Quit to exit `nvidia-settings`:

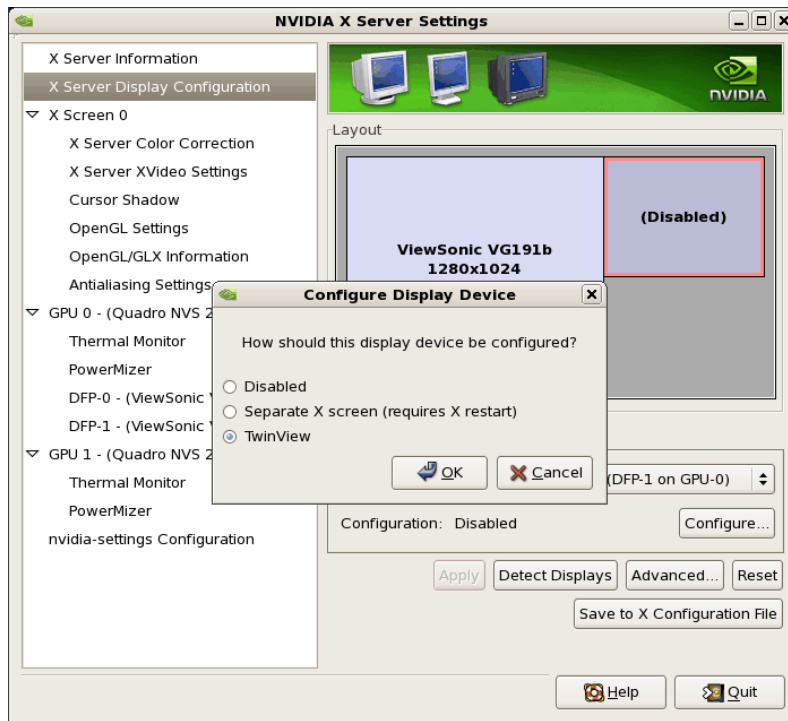


- Reboot to runlevel 5. You should now be up on two X screens. You can restart `nvidia-settings` to further examine or modify your configuration.

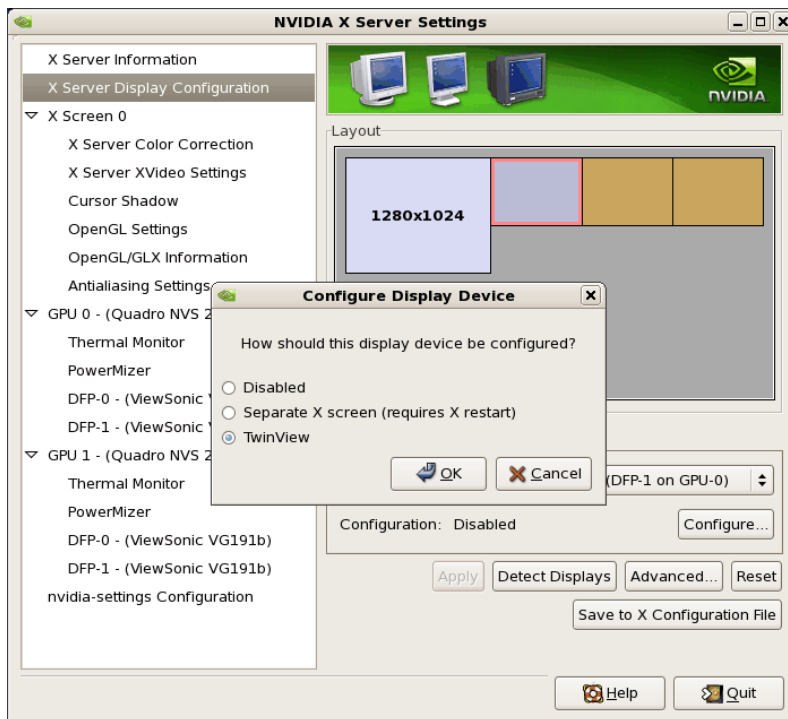
Below shows an example configuring the Xinerama option:

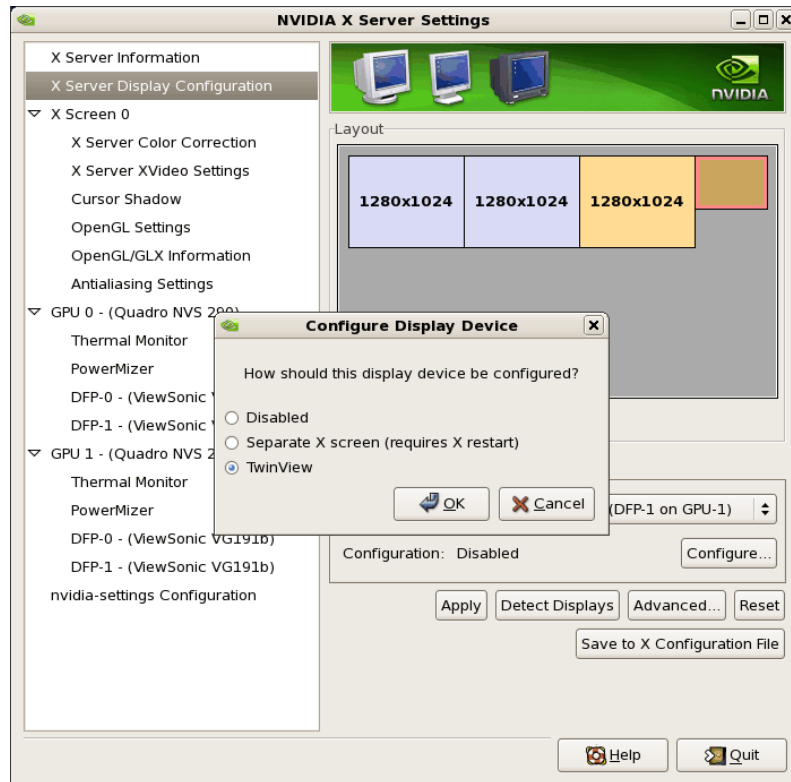
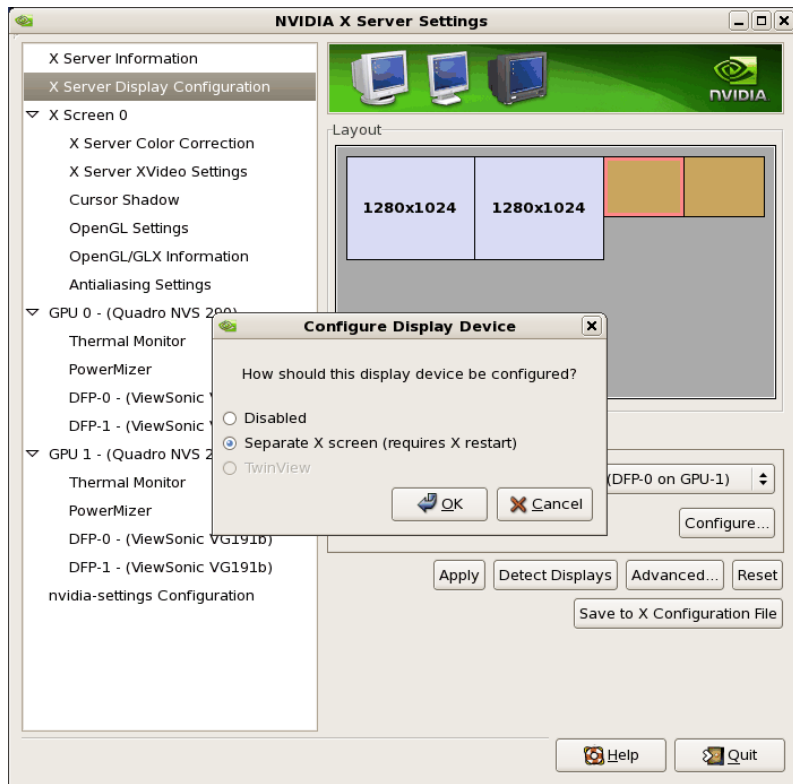


Below shows an example configuring the Twinview option:



Below shows some stages configuring Twinview-Xinerama or Twinview-MultiDesktop (the difference would be in selecting or not selecting the Xinerama check box):





Note that **nvidia-settings** will allow you to do much more than covered here.

In some configurations that don't require restarting X, you can apply changes to test them before saving the config.

You should examine your `/etc/X11/xorg.conf` files after creating them.

It is easier to hand edit for setting some options, but make sure to make incremental backups of your configurations.

7.6 Modified xorg.conf file generated by nvidia-xconfig

The file shown below was created by the `nvidia-xconfig` utility and then pruned down to remove machine specific entries and some superfluous defaults. Some of the entries in this example are not required, but were left in to provide structure for future hand edits.

There should be no need to modify this template if all you are running is a single display with a typical keyboard and mouse.

You may choose to model your basic `xorg.conf` file after this one.

You can enable SLI options by uncommenting the appropriate one in the "Device" Section.

You can run `nvidia-settings` on this template to create any of the display configurations described in this document.

```

Section "ServerLayout"
    Identifier      "ccur nvidia glx realtime"
    Screen         0      "Screen0"
    InputDevice    "Keyboard0" "CoreKeyboard"
    InputDevice    "Mouse0" "CorePointer"
EndSection

Section "Module"
    Load           "dbe"
    Load           "extmod"
    Load           "type1"
    Load           "freetype"
    Load           "glx"
EndSection

Section "Extensions"
    Option         "Composite" "Disable"
EndSection

Section "InputDevice"
    Identifier     "Mouse0"
    Driver         "mouse"
EndSection

Section "InputDevice"
    Identifier     "Keyboard0"
    Driver         "kbd"
EndSection

Section "Monitor"
    Identifier     "Monitor0"
EndSection

Section "Device"
    Identifier     "Device0"
    Driver         "nvidia"
    #Option        "SLI" "Auto"
    #Option        "SLI" "AFR"
    #Option        "SLI" "SFR"
    #Option        "SLI" "SLIAA"
EndSection

```



```

Section "Screen"
    Identifier      "Screen0"
    Device          "Device0"
    Monitor        "Monitor0"
    DefaultDepth   24
    SubSection     "Display"
        Depth      24
    EndSubSection
EndSection

```

7.7 Troubleshooting Problems

The X server looks for a configuration in `/etc/X11/xorg.conf` each time it starts up (normally in runlevel 5). You will find that newer versions of X are getting away from depending on configuration files and require only minimum information to create even the largest multidisplay configurations. In fact, X will work in default mode with NO configuration file at all.

It is not uncommon for obsolete options or incorrect settings specified in `xorg.conf` to cause the system to fail to start X correctly. Sometimes X will get so confused it won't be able to do anything but lock up, cause the system to panic or reboot, or just come up in some wacky video state.

Simply stopping and restarting X does not always do the trick. It is best to issue the command(s):

```
init 1; init 5
```

or

```
reboot
```

See the X server actions logged in `/var/log/Xorg.0.log` and `Xorg.0.log.old`.

Normally, X will respond to errors at start up time by telling you there is a problem and offer to show you the log, then create a fresh configuration.

A fresh configuration looks very much like the configuration created by the installer.

If you are unable to create a working `xorg.conf` using the `nvidia-xconfig` utility, it may be because the directions were not followed precisely, or problems may have been created by hand edits after the fact. Take logical steps and verify functionality at the various steps.

Try removing `/etc/X11/xorg.conf` entirely, reboot to runlevel 3, and run `nvidia-xconfig`.

DO NOT BOOT TO RUNLEVEL 1 OR SINGLE USER MODE AND RUN `nvidia-xconfig` – THIS WILL CREATE A BAD `xorg.conf` FILE.

If you have the original `xorg.conf` created by the installer, but it's not working, you probably have the wrong driver defined for the primary video display defined by the BIOS. Try the following config:

```

Section "ServerLayout"
    Identifier      "Default Layout"
    Screen          0  "Screen0"  0 0
    InputDevice    "Keyboard0"  "CoreKeyboard"
EndSection

Section "InputDevice"
    Identifier      "Keyboard0"
    Driver          "kbd"
EndSection

```

```
Section "Device"
    Identifier      "Videocard0"
    Driver          "vesa"
EndSection

Section "Screen"
    Identifier      "Screen0"
    Device          "Videocard0"
    DefaultDepth    24
    SubSection "Display"
        Viewport    0 0
        Depth       24
    EndSubSection
EndSection
```

Typical drivers in iHawk systems include:

- radeon – Common in many servers with embedded graphics chips
- nv – The generic Linux NVIDIA driver
- nvidia – Provided by NVIDIA or Concurrent Real-Time. NVIDIA drivers are modified by Concurrent Real-Time for real-time performance. Use the correct driver from Concurrent Real-Time to ensure the best performance for your system.
- vesa – The generic fall back low performance driver which should work for all VGA adapters.

NVIDIA has a number of generations of graphics cards which cannot all use the same “nvidia” driver version. Not even the generic “nv” driver in the Linux kernel works on all NVIDIA cards. The “nvidia” driver will actually disable an nvidia controller or fail to load if it is the wrong version for that card. You cannot mix cards of different generations if the driver does not support all of them.

There is no need to specify resolutions, refresh rates, and color depths for modern VGA adapters and Displays. It is best to allow the hardware and software to negotiate these settings.

If resolutions, refresh rates, and color depths were generated by one of NVIDIA’s utilities (**nvidia-xconfig** or **nvidia-settings**) they can be included, but they are superfluous, as well as most options, unless you want to redefine the compiled-in defaults of the X server or device driver.

WARNING

USING OLD CONFIGURATION FILES IS RISKY. IT IS NOT UNCOMMON FOR OBSOLETE OPTIONS AND ENTRIES TO CAUSE YOUR SYSTEM TO HANG, REBOOT, OR PREVENT NORMAL USAGE. YOU SHOULD START WITH THESE BASIC CONFIGS AND GRADUALLY MODIFY THEM WITH THE OPTIONS YOU THINK YOU NEED IN ORDER TO CREATE CUSTOMIZED CONFIGURATIONS.

8.0. Additional Information

This section contains helpful information about issues that may be applicable at your site.

8.1 Installation/Configuration Issues

8.1.1 File System Backup Recommendations

All file systems should be archived or preserved prior to commencing a re-installation. This can be accomplished using normal backup methods. Concurrent Real-Time recommends obtaining a new disk while keeping the original disk to ensure minimal data loss.

Table 7-1 contains a list of configuration files that may be useful in configuring a newly installed RedHawk system to match an existing configuration.

Table 7-1 Files Recommended for Backup

NOTE: This is not an all inclusive list and not all files are meant to be copied intact to a new system.

Path	Comments
/etc/hosts	To preserve hostnames on file.
/etc/fstab	To maintain existing mounts. Will not preserve mount points.
/etc/sysconfig/network	Network information.
/etc/sysconfig/network-scripts/ifcfg-*	Network device configuration.
/etc/resolv.conf	DNS configuration info.
/etc/nsswitch.conf	NIS/DNS configuration info.
/etc/ntp.conf /etc/ntp/step-tickers	NTP configuration. See ntpd(1).
/etc/rc.local /etc/rhosts	Startup info.
/etc/X11/xorg.conf	X11 server/device/screen configuration data.
/etc/modules.conf	For reference and comparison.
/etc/security/capability.conf	PAM configuration.
/etc/ssh/*	To preserve host keys.
/etc/inittab	For reference and comparison.
/etc/xinetd.d/	For reference and comparison. Capture any file customizations.
/var/spool/cron/	To preserve user crontab entries.
/sbin/systemctl -t service -a > <i>save_file</i>	For reference to configure new system.
/etc/*.conf	Customized configuration files.
/etc/sysconfig/*	Customized configuration files.
/etc/pam.d/*	Customized PAM files.
rpm files	Those installed after previous system installation that need to be moved forward to the new system. Use <code>/bin/rpm -qa --last more</code> to view.

8.1.2 File System Swap Size Guidelines

Table 7-2 supplies the recommended swap partition sizes for various sizes of main memory. The swap space allocations listed below should be adequate for all real-time systems.

Table 7-2 Swap Partition Size Guidelines

Main Memory Size (GB)	Recommended Swap Partition Size
0 - 3	2048 MiB
4 - 15	4096 MiB
16 - 63	8192 MiB
64 - 255	16 GiB
256 - 511	32 GiB
512 - 1024	64 GiB

8.1.3 RCIM Connection Modes

Before installing an RCIM on an iHawk system, determine the connection mode. For the RCIM I it is easier to connect the synchronization cable to the input connector before the RCIM is installed. An RCIM can be connected in one of the following four modes:

Isolated mode	There are no connections to any other RCIM.
Master mode	The RCIM is at the head of a chain of RCIMs. There is no cable connection going into this RCIM, only a cable connection going out. The RCIM master is unique in that it controls the synchronized clocks.
Pass-through Slave mode	The RCIM is connected to two other RCIMs. There is an input cable connection coming from the previous RCIM in the chain, and an output cable connection going to the next RCIM in the chain.
Final Slave mode	The RCIM is connected to one other RCIM. There is an input cable connection going into a final slave RCIM but no output cable connection coming out of it.

8.1.4 How to Use Linux Rescue

An installation or upgrade may not boot if the following conditions exist:

- the disk LABEL scheme is not correct
- there are mismatching LABEL or partition entries in `/etc/fstab` and/or `/etc/grub2.cfg` -> `/boot/grub2/grub.cfg`
`/etc/grub2-efi.cfg` -> `/boot/efi/EFI/centos/grub.cfg`

This can happen when dealing with multiple disks and can be extremely confusing.

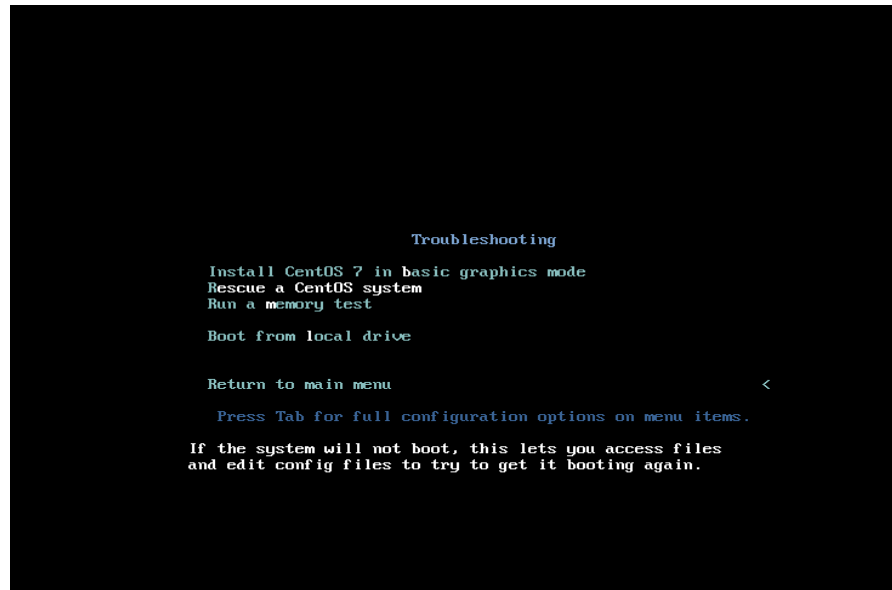
It is possible to recover from these situations by booting into a Linux rescue image via the *Rescue a CentOS Linux system* boot option on the CentOS 7.5 installation media.

If you cannot boot after the installation or upgrade, perform the following steps.

1. Boot a CentOS 7.x installation disc.
2. Once the grub menu is displayed use the arrow keys to select Troubleshooting as shown in the following screen.



3. Press **Enter** and then select Rescue a CentOS Linux system as shown in the following screen.



- Press **Enter** and the system will boot into rescue mode from the live DVD. Once fully booted the following screen will be displayed.

```
Starting installer, one moment...
anaconda 21.48.22.134-1 for CentOS 7 started.
* installation log files are stored in /tmp during the installation
* shell is available on TTY2
* if the graphical installation interface fails to start, try again with the
  inst.text bootoption to start text installation
* when reporting a bug add logs from /tmp as separate text/plain attachments
=====
Rescue

The rescue environment will now attempt to find your Linux installation and
mount it under the directory : /mnt/sysimage. You can then make any changes
required to your system. Choose '1' to proceed with this step.
You can choose to mount your file systems read-only instead of read-write by
choosing '2'.
If for some reason this process does not work choose '3' to skip directly to a
shell.

1) Continue
2) Read-only mount
3) Skip to shell
4) Quit (Reboot)

Please make a selection from the above: _
```

- Press **1** to continue and the following text should be displayed.

```
=====
Rescue Mount

Your system has been mounted under /mnt/sysimage.

If you would like to make your system the root environment, run the command:

    chroot /mnt/sysimage
Please press <return> to get a shell. _
```

- Press **Enter** to get to the root shell.
- You can now examine the files under `/mnt/sysimage` to correct issues identified in error messages before the system failed to boot properly.
- If you wish to transfer files or packages to the system over the network you can start networking via DHCP with the following command. Invoke the **ifconfig** command to find out the network device name if it is not `eth0` as used in this example.

```
ifup eth0
```

- After networking is enabled, you can also issue the following command to better simulate running commands on the actual system:

```
chroot /mnt/sysimage
```

At this point the system files on the hard drive appear in the usual locations in the file system, and you can run additional commands like **ccur-grub2** to change the default kernel to boot or modify kernel boot options. See the **ccur-grub2(1)** man page for more information.

8.1.5 How to Install CentOS Remotely Over VNC

Virtual Network Computing (VNC) is a graphical desktop sharing system which uses the RFB protocol to remotely control another computer. It transmits the keyboard and mouse events from one computer to another, relaying the graphical screen updates in reverse direction, over a network.

VNC by default uses TCP ports 5900 through 5906, each port corresponding to a separate screen (:0 to :6).

If you are having difficulties installing in graphical mode and do not want to use text mode, VNC is an option. You need to be able to establish a network connection between the system you are installing (the VNC server) and the system that will remotely display the installation GUI (the VNC client).

Any system with a VNC viewer application can be used as a VNC client. If you are currently running a previously installed RedHawk system, the VNC client application is accessed under the gnome desktop cascading menu selection: **Applications -> Internet -> Remote Viewer**. Alternatively, you can install the *tigervnc* package and then run the **vncviewer** application.

Perform the following steps to install using VNC.

On the system you wish to install:

1. Follow the procedure outlined in section **5.0. Installation Procedures** on page 10 until you reach **5.1.1** step 4.

Select “Install CentOS 7” from the grub menu.

2. Hit the **Tab** key. Add “vnc” (and other options) to the end of the line that appears:

```
> vmlinuz initrd=initrd.img vnc [options]
```

Hit the **Enter** key.

NOTE

If the VNC service fails to start, it may be necessary to specify the `ip=xxx.xxx.xxx.xxx` and `netmask=xxx.xxx.xxx.xxx` grub options to ensure proper NIC address configuration.

3. Continue with step 5 in section **5.1.1**.
4. After step 5, the VNC installer *may* prompt you with a text based GUI for extra setup. Use the **Tab** key to jump between fields, the up/down arrows within the fields, and the space bar to select your settings.
5. At this point you should see output similar to the following:

```
Starting VNC ...
```

```
WARNING!!! VNC server running with NO PASSWORD
You can use the vncpassword=<password> boot option
if you would like to secure the server.
```

Please manually connect your vnc client to 129.134.30.100:1 to begin the install.

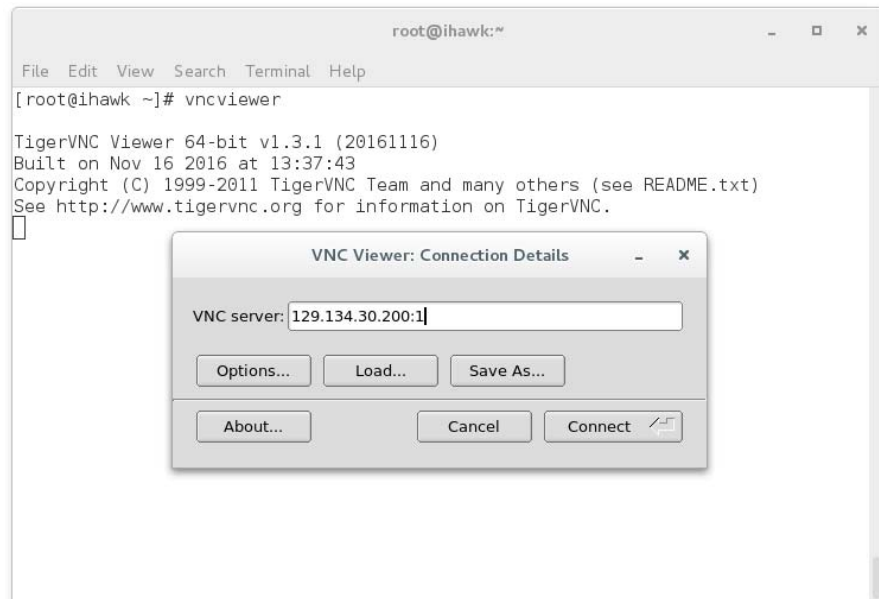
Starting graphical installation.

6. If you wish to verify your network connection to the VNC client, press **Enter** and use **ifconfig** and **ping**. If you cannot ping your intended VNC client, you will have to troubleshoot your network configuration.
7. On the system that you will remotely display the installation (VNC client), start the VNC Viewer.

On the gnome menu: Applications -> Internet -> Remote Viewer

Or from the command line using **vncviewer** if you previously installed the *tigervnc* package.

8. Establish the VNC connection to your VNC server by entering the *IPaddress:screen* in the VNC Viewer: Connection Details dialog box.



9. Select OK and press **Enter** to continue. At this point, you are able to perform a graphical installation remotely.
10. Continue with the graphical installation process as described in section **5.1.1** steps 6 - 21, beginning on page 13. After completing step 24 on page 24, perform the steps below back on the actual system's graphical console.
11. The reboot puts the system in runlevel 3 and a text-based Initial setup prompt is displayed.
12. Type **1** and press **Enter** to proceed to the License information prompt.
13. Type **2** and press **Enter** to select I accept the license agreement.
14. Type **c** and press **Enter** to complete license acceptance and return to the Initial setup prompt.

15. Type `c` and press `Enter` again to complete the Initial setup; the system will now proceed to the customary login prompt.
16. Log in as the root user and issue the following commands to enable graphical startup and reboot the system:

```
# systemctl set-default graphical.target
# reboot
```

17. After the system reboots, continue with the installation as documented.

8.1.6 If the Installation GUI Fails to Start

If during installation the GUI fails to start, it may be caused by graphics driver compatibility problems or with certain graphics cards and/or monitors not being probed properly. Adding the `nomodeset` boot parameter to the kernel may solve this problem.

To modify boot parameters first stop the grub automatic boot countdown by pressing the arrow keys on the keyboard. You should now see a screen similar to the following.

```
RedHawk Linux 7.3-20170417 (Standard) (4.4.60-rt73-RedHawk-7.3)
RedHawk Linux 7.3-20170417 (Trace) (4.4.60-rt73-RedHawk-7.3-trace)
RedHawk Linux 7.3-20170417 (Debug) (4.4.60-rt73-RedHawk-7.3-debug)
CentOS Linux (3.10.0-514.16.1.el7.x86_64) 7 (Core)
CentOS Linux (3.10.0-514.el7.x86_64) 7 (Core)
CentOS Linux (0-rescue-e212d4d55eb34c04961cab4e6c5573c1) 7 (Core)

Use the ↑ and ↓ keys to change the selection.
Press 'e' to edit the selected item, or 'c' for a command prompt.
```

Next press the `e` key to edit the grub boot entry for the highlighted kernel (this example is using the trace kernel) and a screen similar to the following will appear.

```
setparams 'RedHawk Linux 7.3-20170417 (Trace) (4.4.60-rt73-RedHawk-7.3-trace)'

load_video
set gfxpayload=keep
insmod gzio
insmod part_msdos
insmod xfs
set root='hd0,msdos1'
if [ x${feature_platform_search_hint} = xy 1 ]; then
  search --no-floppy --fs-uuid --set=root --hint='hd0,msdos1' 90ec573\
1-f4dd-44af-88eb-d7e187444ecb
else
  search --no-floppy --fs-uuid --set=root 90ec5731-f4dd-44af-88eb-d7e1\
87444ecb
↓

Press Ctrl-x to start, Ctrl-c for a command prompt or Escape to
discard edits and return to the menu. Pressing Tab lists
possible completions.
```

Press the down arrow to scroll down until the line beginning with `linux16` appears. Use the arrow keys to append the `nomodeset` boot option to the end of this line, as shown in the following screen.

```

insmod gzio
insmod part_msdos
insmod xfs
set root='hd0,msdos1'
if [ x${feature_platform_search_hint} = xy ]; then
  search --no-floppy --fs-uuid --set=root --hint='hd0,msdos1' 90ec573\
1-f4dd-44af-88eb-d7e187444ecb
else
  search --no-floppy --fs-uuid --set=root 90ec5731-f4dd-44af-88eb-d7e1\
87444ecb
fi
linux16 /vmlinuz-4.4.60-rt73-RedHawk-7.3-trace root=UUID=de92abf9-a3ad\
-4152-9050-cd65a4a8efda ro LANG=en_US.UTF-8 crashkernel=128M@64M nomodeset
initrd16 /initramfs-4.4.60-rt73-RedHawk-7.3-trace.img

Press Ctrl-x to start, Ctrl-c for a command prompt or Escape to
discard edits and return to the menu. Pressing Tab lists
possible completions.

```

Once the option has been added press `Ctrl-x` to boot the kernel and hopefully the new option will improve the graphics startup situation.

8.2 Considerations

8.2.1 Compiler Requirements

If you plan to build a kernel from source residing on your iHawk system on a different system, that system must be using **gcc-4.4.4** or later.

8.2.2 Hyper-thread Activation

Hyper-threading is configured by default in each of the standard RedHawk Linux kernels. It can be disabled on a per-CPU basis using the `cpu (1)` command. However, hyper-threading is also defined in the system BIOS. The setting in the BIOS will supersede any configuration of this feature in the kernel. Therefore, if hyper-threading is turned off in the BIOS, it will not be available on your system even if it is configured in the kernel.

If your system is not behaving as expected in regards to hyper-threading based on the kernel configuration, check the BIOS setting and modify it as needed. Refer to your hardware documentation to determine which BIOS setting is involved.

9.0. Known Issues

Special consideration should be given to the following areas.

OpenOnload® Network Stack

The OpenOnload software will be available in an update to RedHawk 7.5 but it is not included in the initial RedHawk 7.5 release.

NUMA Kernel Text Page Replication

Kernel Text Page replication, a performance feature that replicates kernel text and read-only pages on Non-Uniform Memory Access (NUMA) nodes is not included in the RedHawk 7.5 release.

BIOS “Console Redirection”

The “Console Redirection” BIOS feature, when enabled, has been observed to interfere with the proper operation of the integrated VGA video and the Xorg X server with some iHawk platforms, such as the Dell PowerEdge™ 6650 (iHawk Model HQ665).

NMI Button

Using the NMI button on the processor enters `kdb` on the console when configured. It cannot be used, however, to step repeatedly through an error condition.

PAM Capabilities

Using Kerberos telnet services with PAM is not recommended. If `krb5-telnet` is on and Kerberos is not properly configured, the following error will occur upon logging in via telnet:

```
login: Cannot resolve network address for KDC in requested realm
while getting initial credentials
```

The `krb5-telnet xinetd` service should be disabled:

```
systemctl disable krb5-telnet
```

sadc(8) Issue

When a system configuration change is made that affects the number of CPUs (for example when booting with a uniprocessor kernel or changing hyper-threading configuration), the `sadc(8)` (sar data collector) program cannot successfully write data in the daily data file `/var/log/sa/sa??` (?? is the day of the month). This results in `crond` sending an email every ten minutes to `root@localhost` with the following message:

```
Cannot append data to that file
```

To eliminate the email, remove or move the `/var/log/sa/sa??` file for the current date.

irqbalance

The **irqbalance** feature is disabled on RedHawk Linux. This CentOS feature is meant to distribute interrupts equally across CPUs. It does not honor the IRQ affinity masks set up in `/proc/irq/irq#/smp_affinity` and therefore will cause interrupts to be routed to shielded CPUs.

This feature can be enabled/disabled at boot time with:

```
systemctl {enable|disable} irqbalance
```

as well as started/stopped while the system is running with:

```
systemctl {start|stop} irqbalance
```

Boot Problems with Monitor-embedded USB Hub and Flash Memory Reader

An iHawk system with a USB hub embedded within its attached monitor that includes a flash memory reader will fail to boot if the flash media is not installed. Once the flash media is installed, the system will boot.

Compatibility Issues for Ada programs

RedHawk 7.5 is based on CentOS Enterprise Linux 7.5. Binary and source compatibility issues exist for MAXAda programs between CentOS 3.0 and CentOS 7.5.

Please see the Compatibility section in the *MAXAda for RedHawk Linux Version 3.5.1 Release Notes*, publication number 0898357-3.5.1, for details.

Inactive Virtual Terminal State After Changing Run Levels

Note that on some systems, changing from run-level 5 to run-level 3 may place the VGA console onto an inactive virtual terminal (e.g. `/dev/tty8`). If this happens, switching to an active virtual terminal will allow normal system operation to continue; press `Ctrl-Alt-1` to switch to virtual terminal 1.

Excessive ksoftirqd Runs Affecting Determinism

In more recent kernel.org kernels the IP route cache table size was changed from a fixed size of 4K entries to a dynamic size based on the amount of available memory. With 4 GB of memory, this table is sized at 128K entries. Every 10 minutes, a flush of that table is initiated. The approximate time to flush 4K entries is 1.5ms every 10 minutes. If the table is sized at 128K entries, this time can be in the area of 10ms to 15ms every 10 minutes. This can be problematic if network determinism is an issue, especially in a single CPU system.

If this is an issue, the IP route cache table can be set to a fixed size using the grub command `rhash_entries=n`, where *n* is the number of table entries; e.g., `rhash_entries=4096` for 4K entries.

Pings to Multicast Addresses Disabled by Default

In more recent kernel.org kernels the default setting for the **sysctl** flag that allows ping to a multicast address has changed. Previously it was set to enable broadcast and multicast ICMP echo (pings) and timestamp requests. Now this functionality is disabled.

There are two methods in which to change this flag if you need to ping multicast addresses:

- The **sysctl (8)** utility changes the value in a running kernel and takes effect immediately; no rebuild or reboot is needed:

```
# sysctl -w net.ipv4.icmp_echo_ignore_broadcasts=0
```

- To initialize the parameter to the desired value on every reboot, add the following command and `sysctl` parameter to `/etc/sysctl.conf`:


```
# Controls broadcast and multicast ICMP echo and timestamp requests
net.ipv4.icmp_echo_ignore_broadcasts = 0
```

Grub Option Holdovers from Previous Kernel Installations

Be aware that when kernel packages are installed, they add a grub entry with options associated with that kernel (e.g., trace and debug kernels add “`crashkernel=128M@64M`,” other kernels add “`quiet`,” etc.). In addition, all kernel packages also copy the default grub options into their grub entries. These default grub options are taken from the kernel entry that is currently marked as the default kernel to boot in `grub.conf`.

Depending upon which kernel is designated the default booting kernel and which kernels are installed subsequently, you may find that grub entries that are inherited from the default kernel and previously installed kernels are not suitable for the currently running kernel.

USB Ports Non-functional on Supermicro Boards

Some Supermicro boards (Model X6DA8-G2, CCUR part number 820-2010483-913) may have non-functional USB ports accompanied by the following message:

```
USB 1-1: new high speed USB device using ehci_hsd and address 2
USB 1-1: device descriptor read/64, error -110
```

This can be corrected by changing the BIOS setting for both SATA [0/1] IDE Interface and SCSI interface controllers to “ENABLED”.

Configure Quad Port Ethernet

If your system has a quad port Ethernet, you may need to edit `/etc/modprobe.conf` and configure the ports to the appropriate driver. The example below assigns the quad port to `eth0` through `eth3` and uses the Intel `e1000` module (Gigabit Network driver). For readability, convention has these lines inserted at the top of `/etc/modprobe.conf`.

```
alias eth0 e1000
alias eth1 e1000
alias eth2 e1000
alias eth3 e1000
```

NFS v4 Intermittent Connectivity

On rare occasions, attempts to use NFS version 4 protocol to connect to an older NFS server may be denied intermittently, with the connection also subsequently failing to negotiate an NFS version 3 protocol connection. If your system experiences this behavior with any NFS servers, adding a `vers=3` mount option to the corresponding entry in `/etc/fstab` will allow the NFS filesystem to be mounted properly.

Unable to Login After Enabling SELinux

If you experience problems logging into RedHawk systems after enabling SELinux (e.g. after entering login and password the system immediately returns to the login screen) then you will need to relabel the filesystem to be compatible with SELinux. Reboot the system using the CentOS kernel and issue the following command as the root user:

```
# touch /.autorelabel
```

Then reboot the system to the RedHawk kernel and you should be able to login successfully.

polkitd and dbus-daemon Processes Utilize Excessive CPU Resources

RedHawk installations using the GNOME graphical user interface may notice that the **polkitd** authorization daemon and the **dbus-daemon** can utilize 15% or more of the available CPU resources on the system, even when the system is otherwise idle. This excessive CPU utilization is the result of a software bug in the GNOME Settings Daemon which causes it to continuously check for password expiration erroneously.

Issue the following command as the root user to work around this GNOME Settings Daemon bug and eliminate the excessive CPU utilization:

```
# gsettings set org.gnome.settings-daemon.plugins.account \
    notify-period 0
```

10.0. Software Updates and Support

10.1 Direct Software Support

Software support is available from a central source. If you need assistance or information about your system, please contact the Concurrent Real-Time Software Support Center at our toll free number 1-800-245-6453. For calls outside the continental United States, the number is 1-954-283-1822. The Software Support Center operates Monday through Friday from 8 a.m. to 5 p.m., Eastern Standard Time.

Calling the Software Support Center gives you immediate access to a broad range of skilled personnel and guarantees you a prompt response from the person most qualified to assist you. If you have a question requiring on-site assistance or consultation, the Software Support Center staff will arrange for a field analyst to return your call and schedule a visit.

You may also submit a request for assistance at any time by using the Concurrent Real-Time, Inc. web site at <http://concurrent-rt.com/support>

10.2 Software Updates

Updates to Concurrent Real-Time RedHawk software can be obtained via Concurrent Real-Time's Software Portal. There are three ways of installing product updates:

- Using the Network Update Utility (NUU) installed on your RedHawk system
- Manual installation after browsing and downloading individual RPMs from Concurrent Real-Time's software repositories
- Building a customized Update disc using Concurrent Real-Time's web site for immediate download

10.2.1 Updating via NUU

NUU supports installation and updating of software products from Concurrent Real-Time software repositories over a network. NUU utilizes Yum and the RPM subsystems to install and update software.

NUU is installed automatically with RedHawk, however, you should configure it to include all of the Concurrent Real-Time software products installed on your system.

Clicking on the "Updates (NUU)" icon on your desktop launches NUU to check to see if Concurrent Real-Time updates are available for your system.

NOTE

It is recommended that all CentOS repositories should be disabled when checking for Concurrent Real-Time updates. In NUU, select the **Repositories -> Edit Configuration** menu item and ensure that the *base*, *updates* and *extras* repositories are disabled.

Instructions for configuring NUU can be found in the QuickStart.pdf document available when you click on the NUU link on the redhawk.concurrent-rt.com website or directly via this link <http://redhawk.concurrent-rt.com/network/QuickStart.pdf>

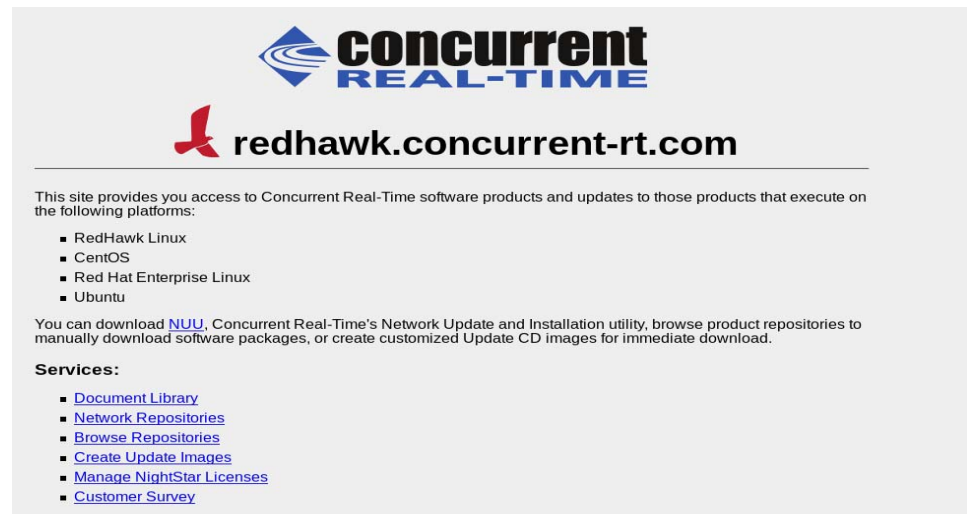
The first time you invoke NUU you will need to specify your redhawk.concurrent-rt.com Login ID and Password that were provided in the shipping documents accompanying your system. If you require assistance, refer to “Direct Software Support” on page 67.

Before using NUU to install any updated software modules, check for NUU updates separately. Apply any NUU updates and then restart NUU before applying any other updates.

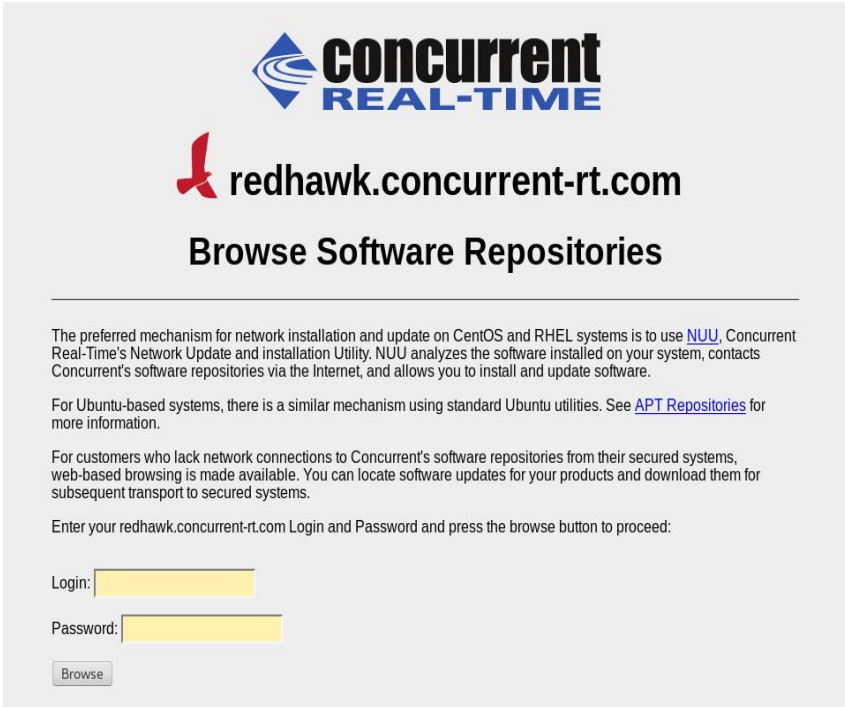
10.2.2 Installing Manually Downloaded RPMs

You can browse Concurrent Real-Time’s software repositories to locate updated RPMs and download them for manual installation.

Access the RedHawk Updates web site (<http://redhawk.concurrent-rt.com>) by clicking on the “Concurrent Real-Time Software Portal” icon on the desktop. Below is the top half of the screen displayed when you access this web site.



Clicking on the [Browse Repositories](#) link takes you to an authentication page.



concurrent
REAL-TIME

redhawk.concurrent-rt.com

Browse Software Repositories

The preferred mechanism for network installation and update on CentOS and RHEL systems is to use [NUU](#). Concurrent Real-Time's Network Update and installation Utility, NUU analyzes the software installed on your system, contacts Concurrent's software repositories via the Internet, and allows you to install and update software.

For Ubuntu-based systems, there is a similar mechanism using standard Ubuntu utilities. See [APT Repositories](#) for more information.

For customers who lack network connections to Concurrent's software repositories from their secured systems, web-based browsing is made available. You can locate software updates for your products and download them for subsequent transport to secured systems.




Enter your redhawk.concurrent-rt.com Login and Password and press the browse button to proceed:

Login:

Password:

Enter your redhawk.concurrent-rt.com Login ID and Password and click the **Browse** button.

Select the products of interest and architecture from the following pages to see the list of RPMs in the product software repository.

Index of /home/repos/RedHawk/7.5				
Name	Last modified	Size	Description	
 Parent Directory/				-
 i386/	29-May-2018 16:37			-
 i686/	22-Jan-2018 15:49			-
 x86_64/	24-Jan-2018 10:45			-

To locate the latest RPMs in the repository, click on the **Last modified** column header to sort by date. You may need to click twice to set the sort order to newest-to-oldest.

After locating the RPMs of interest and downloading them to your system, you can manually install them.

To install newly downloaded packages, follow these steps:

1. Log in as root and take the system down to single-user mode:
 - a. Right click on the desktop and select **Open Terminal**.
 - b. At the system prompt, type **init 1**.
2. Change directory to the location of the updates and issue the following command:

```
rpm -Uvh * .rpm
```

The time it takes to install will vary depending on the number of updates being installed.

3. When complete, exit single-user mode (Ctrl-D).

NOTE

If you have installed an update containing new RedHawk kernels on a system that has post-installation loadable modules present, those modules must be recompiled for the new kernel; for example, an NVIDIA driver that is a later version than the one included with RedHawk or any third party package that uses loadable modules.

10.2.3 Customized Update Discs

You can use Concurrent Real-Time's Software Portal to create a customized Update Disc for your system which you can then download and burn onto physical media, or simply mount as an ISO9660 image.

Update discs have customized copies of product software repositories and a simple graphical interface for selecting packages for update and installation. These discs use NUU (described above) to talk to the disc to obtain packages -- no network access is required during installation via Update Discs.

Access the RedHawk Updates web site (<http://redhawk.concurrent-rt.com>) by clicking on the "Concurrent Real-Time Software Portal" icon on the desktop, then click on **Create Update Images**.

You will need to enter your redhawk.concurrent-rt.com Login ID and Password and then you can select the products to update. A disc image is built as part of the web session. At the end of the session, you can immediately download it for subsequent installation.

10.3 Documentation Updates

For the latest documents, including updated Release Notes and User Guides, go to Concurrent Real-Time's documentation web site at <http://redhawk.concurrent-rt.com/docs>.

You can also view the latest RedHawk FAQ at <http://redhawk.concurrent-rt.com/docs/root/1redhawk/FAQ/RedHawk-FAQ.pdf>.

A Ubuntu Support

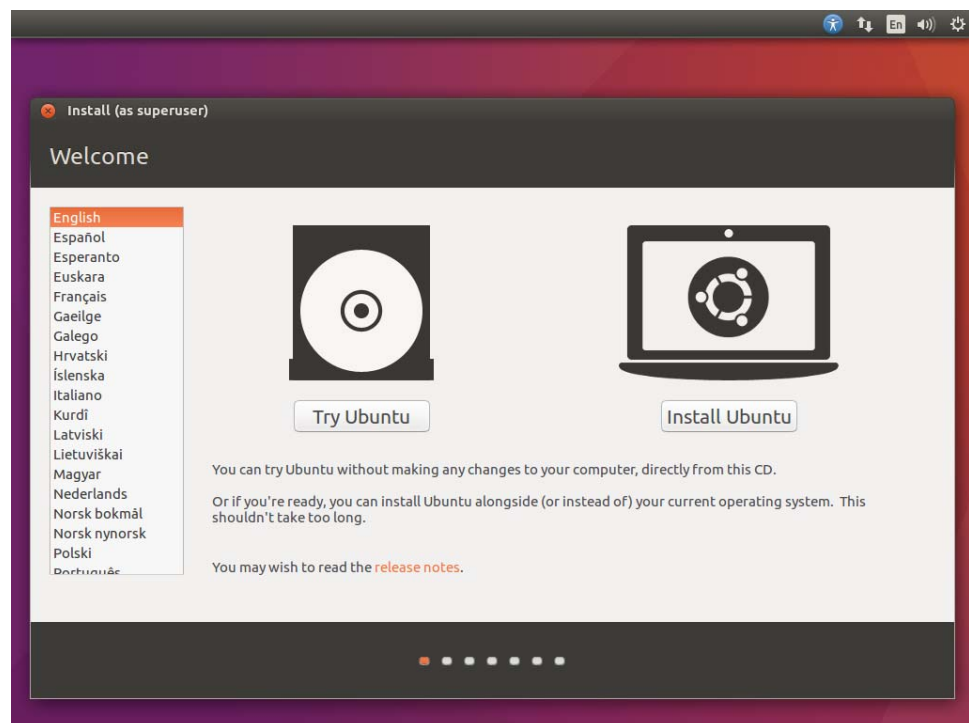
This appendix contains additional information on using RedHawk 7.5 with the open source Ubuntu Linux distribution.

Overview

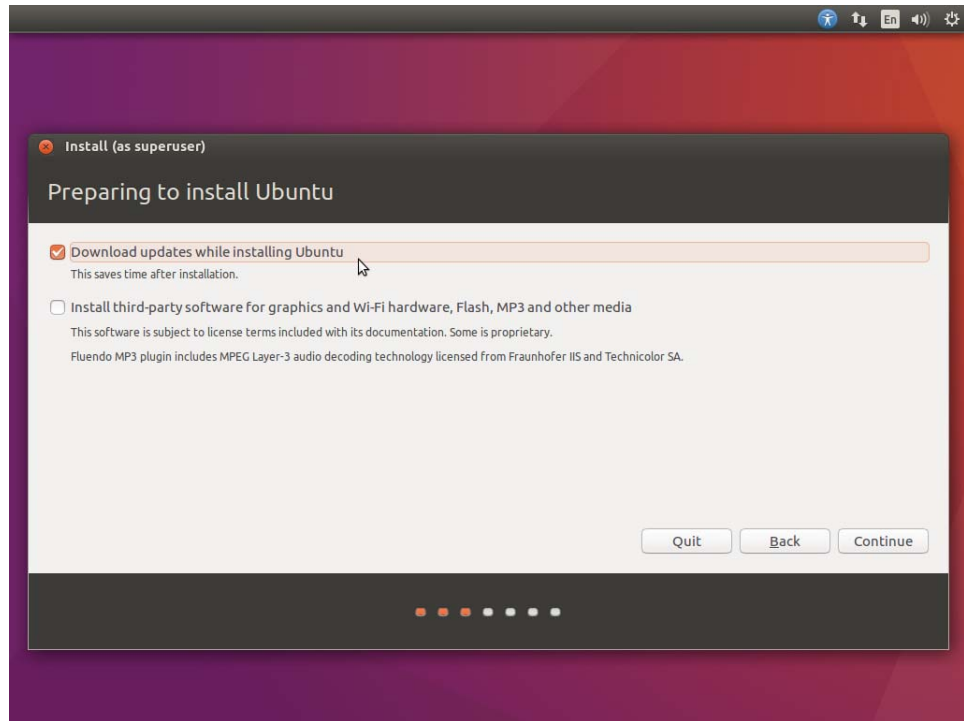
RedHawk 7.5 is compatible with the Ubuntu 16.04 LTS (Long Term Support) distribution. This appendix provides instructions for installing RedHawk 7.5 onto a brand new Ubuntu 16.04 installation. Installing RedHawk 7.5 onto an existing Ubuntu 16.04 system should also work correctly, however that is beyond the scope of this document.

Installing Ubuntu

First, download the latest Ubuntu 16.04 LTS Desktop ISO from the Ubuntu.com website and burn it onto a DVD. Boot the DVD in your target system and the following screen should be displayed:

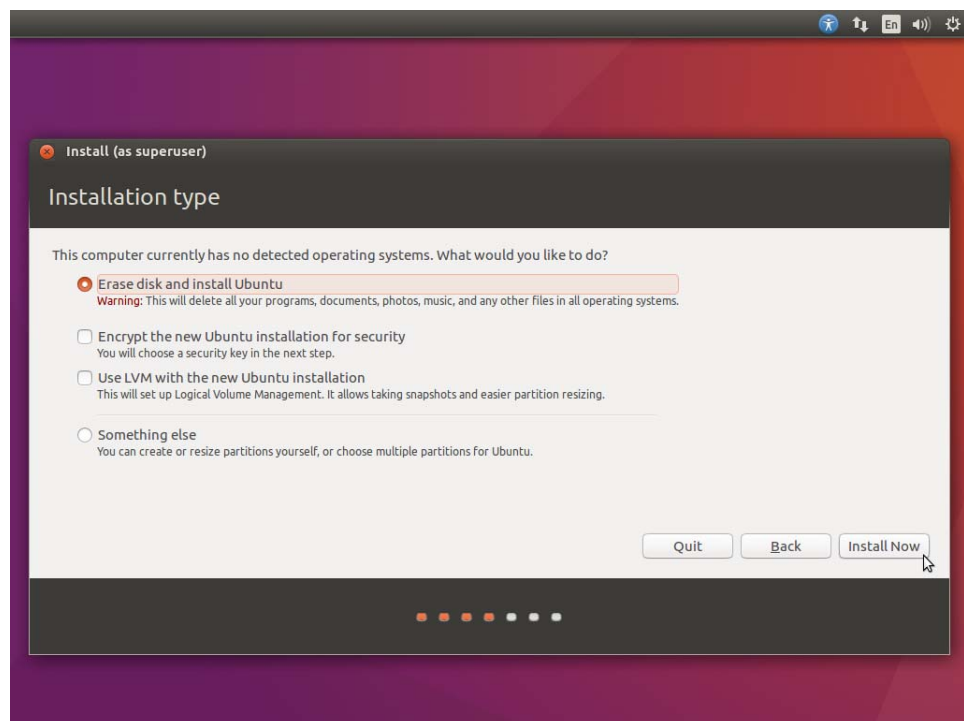


Press the **Install Ubuntu** button to begin the installation. The following screen should be displayed:



Check the **Download updates while installing Ubuntu** checkbox to ensure that all of the latest Ubuntu updates are downloaded and used during the Ubuntu installation.

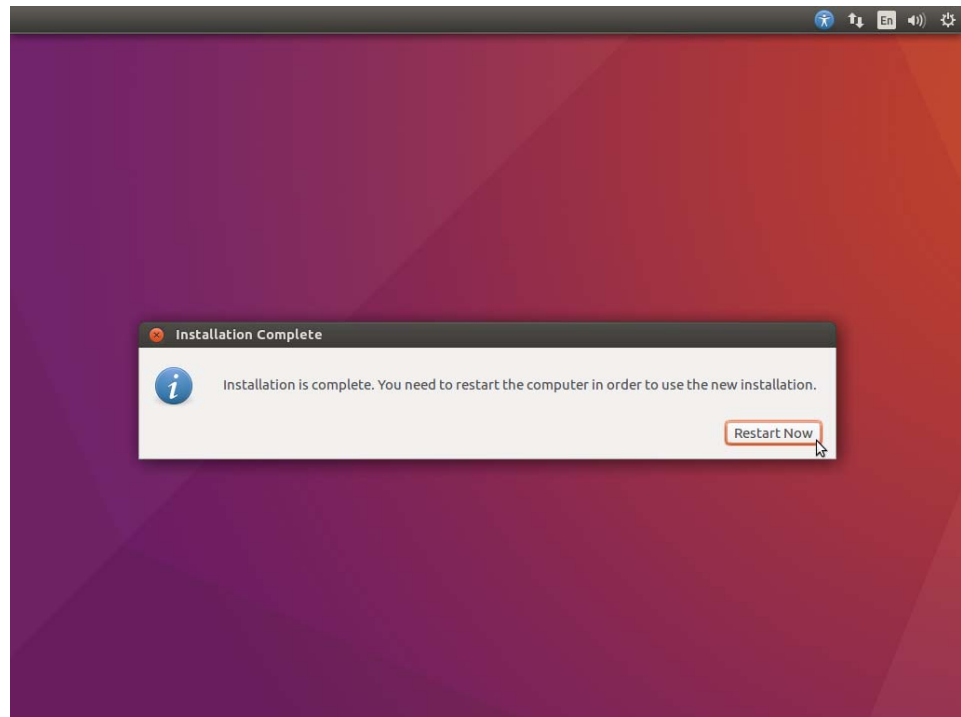
Press **Continue** and then the **Installation type** screen should be displayed:



Choose **Erase disk and install Ubuntu** and then press **Install Now** to continue. You will then be prompted to confirm erasure; press **Continue** to confirm and continue.

Next you will be prompted to configure various settings including **Timezone**, **Keyboard layout**, **Username**, **Password**, **System Name**, etc. After configuring the settings as desired, press **Continue** to continue with the installation.

Depending on system and network speed, the installation can take up to 60 minutes to complete; once the installation has finished, the following screen will be displayed:



Press **Restart Now** to reboot the newly installed system.

Installing RedHawk Linux

Log into the system once it has booted up to the graphical login screen and insert the RedHawk OS Installation DVD into the system's optical media drive. Close any file-browser window that opens when the DVD is inserted, open a terminal window, and `cd` to the mounted directory of the DVD.

Execute the following commands to install RedHawk Linux, substituting the actual mount point used for your optical media device if necessary:

NOTE

Ubuntu 16.04 has a bug that prevents installing from DVD. After inserting the DVD, issue the following command to workaround this bug: `sudo setfacl -m g::5,o::5 /media/*`

```
cd /path-to-actual-mount-point
sudo ./install-redhawk
```

```

installer@finny: /media/installer/RedHawk 7.5 x86_64
installer@finny:/media/installer/RedHawk 7.5 x86_64$ pwd
/media/installer/RedHawk 7.5 x86_64
installer@finny:/media/installer/RedHawk 7.5 x86_64$ ls
Documentation  install          launch.in  source      uninstall-redhawk
EULA          install-redhawk  Packages  uninstall
installer@finny:/media/installer/RedHawk 7.5 x86_64$ sudo ./install-redhawk

This process will install the RedHawk Linux core files
for RedHawk Linux 7.5 (Rey) on the current system (finny).

Do you want to install RedHawk Linux? [y/n] y

-----
Concurrent Real-Time End-User License Agreement (the EULA).

This license should be read before acceptance of its terms. If the terms
are not acceptable then you must reject the license and terminate the
installation process.

A copy of this license may be found in /usr/share/doc/ccur/RedHawk-EULA
after installation.

-----
View, Accept, or Reject the terms of this license? [v/a/r] █

```

NOTES

- NOTE 1: Special instructions are displayed during the installation that may require appropriate action, such as video card installation and configuration. Follow the on-screen instructions until the installation script completes.
- NOTE 2: The installation script will prompt you to accept or reject the End User License Agreement. You can view the agreement by entering “v” at the prompt.
- NOTE 3: While the messages displayed during RedHawk installation appear to indicate that package *downloading* is occurring, no actual network access is performed when using the RedHawk DVD.
- NOTE 4: It is normal for the installation script to appear to be stalled near the end of installation. It is performing several background operations that are required and the script must not be interrupted.

The following messages will be displayed once all RedHawk package installation has completed successfully. In this example the optional nvidia and cuda packages were installed.

```

installer@finny: /media/installer/RedHawk 7.5 x86_64
Setting up ccur-rtbench (7.5-20180605) ...
Setting up ccur-rtctl (1.13-2.7.5-20180605) ...
Created symlink from /etc/systemd/system/multi-user.target.wants/rtctl.service
to /etc/systemd/system/rtctl.service.
Setting up ccur-shield (7.5-20180605) ...
Created symlink from /etc/systemd/system/multi-user.target.wants/shield.service
to /lib/systemd/system/shield.service.
Setting up ccur-strace (4.22-7.5-20180605) ...
Setting up ccur-vmlinux (7.5-20180605) ...
Setting up ccur-vmlinux-debug (7.5-20180605) ...
Setting up ccur-vmlinux-kdump (7.5-20180605) ...
Setting up ccur-vmlinux-trace (7.5-20180605) ...
Setting up ccur-vtop (7.5-20180605) ...
Setting up ccur-xtrace (7.5-20180605) ...
Setting up libssl-doc (1.0.2g-1ubuntu4.12) ...
Processing triggers for libc-bin (2.23-0ubuntu5) ...

The RedHawk Linux installation is complete.

Please contact Concurrent Real-Time technical support if you had any
problems during this installation (http://www.concurrent-rt.com/support
or 1-800-245-6453).

installer@finny: /media/installer/RedHawk 7.5 x86_64$

```

Eject and remove the disc from the drive and reboot the system choosing a newly installed RedHawk kernel and verify that the system boots up to the graphical login.

At this point you have completed the basic RedHawk Linux installation. If you wish to install additional RedHawk software, refer to the following sections in the main chapter of the Release Notes:

- “Installing the RCIM” on page 32
- “Installing Frequency-Based Scheduler (FBS) Software” on page 34
- “Installing Additional RedHawk Products” on page 35

RedHawk Software Updates

NOTE

The latest and most up-to-date instructions for installing software via Concurrent’s network package repositories can always be found on the <http://redhawk.concurrent-rt.com/network> web page.

Perform the following steps to allow the Ubuntu package management software to access Concurrent Real-Time's Ubuntu package repositories.

1. Obtain Concurrent Real-Time's public keys by issuing the following command:

```
wget http://redhawk.concurrent-rt.com/network/ccur-public-keys
```

2. Add these keys to the package management database by issuing the following command:

```
apt-key add ccur-public-keys
```

3. Create a new file named `redhawk.list` in the `/etc/apt/sources.list.d` directory with the following line:

```
deb http://redhawk.concurrent-rt.com/ubuntu/Login/Pass/redhawk/generic 7.5 core
```

replacing Login and Password with your assigned values.

The Login ID (also referred to as your Site ID) and the corresponding password are needed to access products from Concurrent Real-Time. These values are assigned to you from Concurrent Real-Time and are included on a cover letter that is delivered with your system or with your software.

4. In addition to the core channel shown in `redhawk.list` you can add `fbs` and/or `rcimgps` to the end of the line if you have purchased those optional products.
5. Issue the following command to update the currently cached package repository information:

```
apt-get update
```

This command will *not* change any software on your system -- it merely updates all of the package repository definitions from the `/etc/apt/sources.list` and the files under `/etc/apt/sources.list.d`.

6. Use the following command to bring your system up-to-date with the latest software packages from Concurrent Real-Time:

```
apt-get install 'ccur-*
```

It is important that you use single quotes around the `ccur-*` text so that the command will correctly match all available packages.

7. Alternatively, you can install or update individual specific Concurrent Real-Time packages using a command similar to the following example:

```
apt-get install ccur-kernel-trace ccur-vmlinux-trace
```


Ubuntu-Specific Notes

This section captures various Ubuntu-specific procedures that differ from CentOS procedures that existing RedHawk customers may be familiar with.

Building Custom Kernels

You must first install the `bc`, `pkg-config` and `libqt4-dev` packages before you can build a custom RedHawk kernel on an Ubuntu system. Note that installing these three packages will also pull in many other package dependencies that are also required.

Installing Custom Kernels

To install a newly build RedHawk customer kernel you should follow the usual steps that are described in the `ccur-config(1)` man page. However, you will also need to issue some additional commands to complete the kernel installation.

The following commands provide an example that will configure, build and fully install a custom kernel based on the RedHawk trace configuration.

```
# cd /usr/src/linux-4.4.60RedHawk7.3
# ./ccur-config trace
# make bzImage modules
# make modules_install
# make install
# mv /boot/vmlinuz /boot/vmlinuz-4.4.60-rt73-RedHawk-7.3-custom
# mv /boot/System.map /boot/System.map-4.4.60-rt73-RedHawk-7.3-custom
# update-initramfs -c -k 4.4.60-rt73-RedHawk-7.3-custom
# update-grub
```

Note that you will likely receive an error during the "make install" step; this error can be safely ignored if the following commands are subsequently issued.

B

ARM64 Support

This appendix contains additional information on using RedHawk 7.5 with hardware that utilizes the 64-bit ARMv8-A processor architecture (a.k.a. *ARM64*, a.k.a. *Aarch64*).

Overview

RedHawk 7.5 has been ported to the ARM64 architecture and has currently been qualified on the following development systems:

- Applied Micro X-C1 Server Development Platform (a.k.a. Mustang)
- ARM Juno R1 64-bit Development Platform

Support for additional ARM64 systems is planned. Customers interested in other systems should contact their regional Concurrent Real-Time sales representative for more information.

Installation

Installation of RedHawk 7.5 for ARM64 is supported utilizing both the CentOS 7.5 and Ubuntu 16.04 LTS base distributions. Unfortunately, the installation of these base distributions on all currently available ARM64 hardware varies considerably and is beyond the scope of this document.

Concurrent Real-Time recommends that you purchase pre-installed ARM64 systems from Concurrent Real-Time instead of trying to install them yourself. However, for those up for the challenge, the following guidelines may help guide you during the initial base distribution installation:

- For RedHawk to work the board must be configured with UEFI firmware. Boards that come pre-installed with other firmware (e.g. the *Das U-Boot* boot loader) cannot be used with RedHawk until they are converted to UEFI. See the many resources on the Internet for conversion instructions.
- Few ARM64 systems feature a graphical console, however both CentOS and Ubuntu support installation using a simple text interface over the serial console. In addition, CentOS can still be installed graphically by utilizing a remote VNC connection. Refer to Internet resources for more information.
- Often the easiest method for performing a CentOS or Ubuntu installation is to connect a USB DVD reader to the ARM64 system with the distribution's optical media disc inserted. While it is unlikely that the system will be able

to automatically boot the disc's installer, once the system is booted to a UEFI shell manual commands can be issued to boot the disc's installer.

- Once the base distribution installation has started successfully, refer to “Installing CentOS” on page 11 or “Installing Ubuntu” on page A-1 to complete the base distribution installation.

After performing any necessary initial low-level configuration of the ARM64 system and successfully installing the base distribution, continue with “Installing RedHawk Linux” on page 29 for CentOS systems or “Installing RedHawk Linux” on page A-3 for Ubuntu systems.